

Product Name: PRPF39 Rabbit Polyclonal Antibody**Catalog #: APRab16549**

For research use only.

Summary

Description	Rabbit polyclonal Antibody
Host	Rabbit
Application	WB,IHC,ICC/IF,ELISA
Reactivity	Human,Mouse
Conjugation	Unconjugated
Modification	Unmodified
Isotype	IgG
Clonality	Polyclonal
Form	Liquid
Concentration	1mg/ml
Storage	Aliquot and store at -20°C (valid for 12 months). Avoid freeze/thaw cycles.
Shipping	Ice bags
Buffer	Liquid in PBS containing 50% glycerol, 0.5% protective protein and 0.02% New type preservative N.
Purification	Affinity purification

Application

Dilution Ratio	WB 1:500-1:2000,IHC 1:100-1:300,ICC/IF 1:50-1:200,ELISA 1:20000-1:40000
Molecular Weight	74kDa

Antigen Information

Gene Name	PRPF39
Alternative Names	PRPF39; Pre-mRNA-processing factor 39; PRP39 homolog
Gene ID	55015.0
SwissProt ID	Q86UA1
Immunogen	The antiserum was produced against synthesized peptide derived from human PRPF39. AA range:263-312

Background

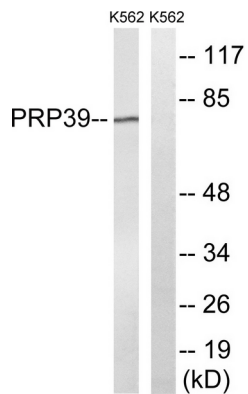
function:Involved in pre-mRNA splicing.,similarity:Belongs to the PRP39 family.,similarity:Contains 7 HAT

repeats.,function:Involved in pre-mRNA splicing.,similarity:Belongs to the PRP39 family.,similarity:Contains 7 HAT repeats.,

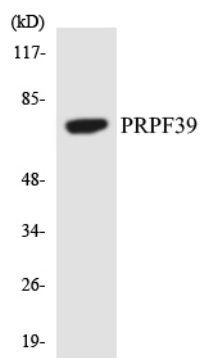
Research Area

Epigenetics and Nuclear Signaling; DNA / RNA; RNA Processing; Splicing

Image Data



Western blot analysis of lysates from K562 cells, using PRPF39 Antibody. The lane on the right is blocked with the synthesized peptide.



Western blot analysis of the lysates from COLO205 cells using PRPF39 antibody.