

Product Name: PRPF38A Rabbit Polyclonal Antibody
Catalog #: APRab16548



Summary

Production Name	PRPF38A Rabbit Polyclonal Antibody
Description	Rabbit Polyclonal Antibody
Host	Rabbit
Application	WB,IHC-P,IF-P,IF-F,ICC/IF,ELISA
Reactivity	Human,Mouse

Performance

Conjugation	Unconjugated
Modification	Unmodified
Isotype	IgG
Clonality	Polyclonal
Form	Liquid
Storage	Store at 4°C short term. Aliquot and store at -20°C long term. Avoid freeze/thaw cycles.
Buffer	Liquid in PBS containing 50% glycerol, 0.5% protective protein and 0.02% New type preservative N.
Purification	Affinity purification

Immunogen

Gene Name	PRPF38A
Alternative Names	PRPF38A; Pre-mRNA-splicing factor 38A
Gene ID	84950.0
SwissProt ID	Q8NAV1.The antiserum was produced against synthesized peptide derived from human PRPF38A. AA range:104-153

Application

Dilution Ratio	WB 1:500-1:2000, IHC-P 1:100-1:300, ELISA 1:20000, IF-P/IF-F/ICC/IF 1:50-200
Molecular Weight	40kDa

Product Name: PRPF38A Rabbit Polyclonal Antibody
Catalog #: APRab16548



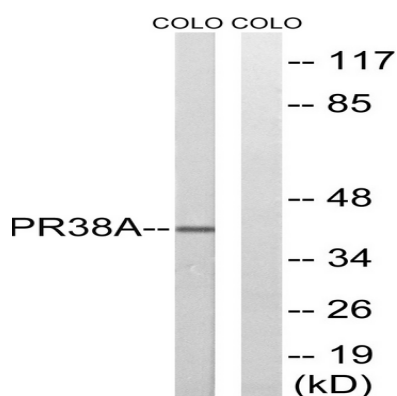
Background

function: May be required for pre-mRNA splicing „similarity: Belongs to the PRP38 family„function: May be required for pre-mRNA splicing „similarity: Belongs to the PRP38 family„

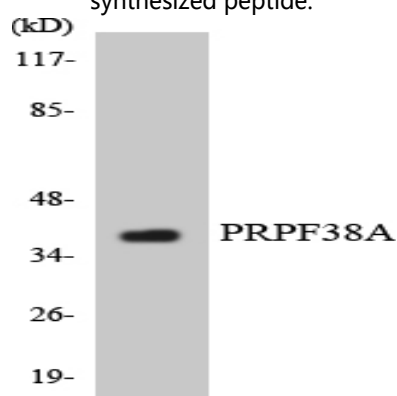
Research Area

Spliceosome;

Image Data



Western blot analysis of lysates from COLO cells, using PRPF38A Antibody. The lane on the right is blocked with the synthesized peptide.



Western blot analysis of the lysates from HUVEC cells using PRPF38A antibody.

Note

For research use only.