

Product Name: PRPF31 Rabbit Polyclonal Antibody**Catalog #: APRab16547**

For research use only.

Summary

Description	Rabbit polyclonal Antibody
Host	Rabbit
Application	WB,IHC,ELISA
Reactivity	Human,Mouse
Conjugation	Unconjugated
Modification	Unmodified
Isotype	IgG
Clonality	Polyclonal
Form	Liquid
Concentration	1mg/ml
Storage	Aliquot and store at -20°C (valid for 12 months). Avoid freeze/thaw cycles.
Shipping	Ice bags
Buffer	Liquid in PBS containing 50% glycerol, 0.5% protective protein and 0.02% New type preservative N.
Purification	Affinity purification

Application

Dilution Ratio	WB 1:500-1:2000,IHC 1:50-1:300,ELISA 1:2000-1:20000
Molecular Weight	55kDa

Antigen Information

Gene Name	PRPF31 PRPF31; PRP31; U4/U6 small nuclear ribonucleoprotein Prp31; Pre-mRNA-processing factor
Alternative Names	31; Serologically defined breast cancer antigen NY-BR-99; U4/U6 snRNP 61 kDa protein; Protein 61K; hPrp31
Gene ID	26121.0
SwissProt ID	Q8WWY3
Immunogen	The antiserum was produced against synthesized peptide derived from human PRP31. AA range:331-380

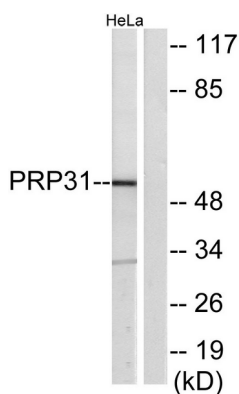
Background

This gene encodes a component of the spliceosome complex and is one of several retinitis pigmentosa-causing genes. When the gene product is added to the spliceosome complex, activation occurs.[provided by RefSeq, Jan 2009],disease:Defects in PRPF31 are the cause of retinitis pigmentosa type 11 (RP11) [MIM:600138]. RP leads to degeneration of retinal photoreceptor cells. Patients typically have night vision blindness and loss of midperipheral visual field. As their condition progresses, they lose their far peripheral visual field and eventually central vision as well. RP11 inheritance is autosomal dominant.,function:Involved in pre-mRNA splicing. Required for U4/U6.U5 tri-snRNP formation.,similarity:Contains 1 Nop domain.,subcellular location:Predominantly found in speckles and in Cajal bodies.,subunit:Part of a tri-snRNP complex. Interacts with C20orf14/U5 snRNP-associated 102 kDa protein.,tissue specificity:Ubiquitously expressed.,

Research Area

Spliceosome;

Image Data



Western blot analysis of lysates from HeLa cells, using PRP31 Antibody. The lane on the right is blocked with the synthesized peptide.