

Product Name: Prolactin Rabbit Polyclonal Antibody**Catalog #: APRab16521**

For research use only.

Summary

Description	Rabbit polyclonal Antibody
Host	Rabbit
Application	WB,IHC,ICC/IF,ELISA
Reactivity	Human,Rat,Mouse
Conjugation	Unconjugated
Modification	Unmodified
Isotype	IgG
Clonality	Polyclonal
Form	Liquid
Concentration	1mg/ml
Storage	Aliquot and store at -20°C (valid for 12 months). Avoid freeze/thaw cycles.
Shipping	Ice bags
Buffer	Liquid in PBS containing 50% glycerol, 0.5% protective protein and 0.02% New type preservative N.
Purification	Affinity purification

Application

Dilution Ratio	WB 1:500-1:2000,IHC 1:100-1:300,ICC/IF 1:50-1:200,ELISA 1:10000-1:20000
Molecular Weight	25kDa

Antigen Information

Gene Name	PRL
Alternative Names	PRL; Prolactin; PRL
Gene ID	5617.0
SwissProt ID	P01236
Immunogen	The antiserum was produced against synthesized peptide derived from the Internal region of human PRL. AA range:131-180

Background

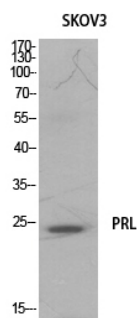
This gene encodes the anterior pituitary hormone prolactin. This secreted hormone is a growth regulator for many tissues,

including cells of the immune system. It may also play a role in cell survival by suppressing apoptosis, and it is essential for lactation. Alternative splicing results in multiple transcript variants that encode the same protein. [provided by RefSeq, Aug 2011],function:Prolactin acts primarily on the mammary gland by promoting lactation.,online information:Prolactin entry,similarity:Belongs to the somatotropin/prolactin family.,

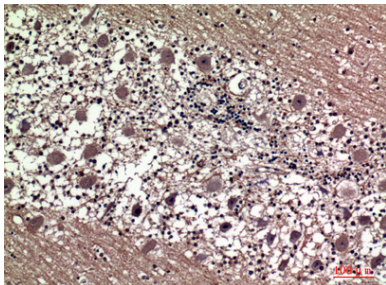
Research Area

Cytokine-cytokine receptor interaction;Neuroactive ligand-receptor interaction;Jak_STAT;

Image Data



Western Blot analysis of SKOV3 cells using Prolactin Polyclonal Antibody..
Secondary antibody was diluted at 1:20000



Immunohistochemical analysis of paraffin-embedded human-brain, antibody was diluted at 1:100