

Product Name: PRKY Rabbit Polyclonal Antibody
Catalog #: APRab16501



Summary

Production Name	PRKY Rabbit Polyclonal Antibody
Description	Rabbit Polyclonal Antibody
Host	Rabbit
Application	WB,IHC-P,IF-P,IF-F,ICC/IF,ELISA
Reactivity	Human,Rat,Mouse

Performance

Conjugation	Unconjugated
Modification	Unmodified
Isotype	IgG
Clonality	Polyclonal
Form	Liquid
Storage	Store at 4°C short term. Aliquot and store at -20°C long term. Avoid freeze/thaw cycles.
Buffer	Liquid in PBS containing 50% glycerol, 0.5% protective protein and 0.02% New type preservative N.
Purification	Affinity purification

Immunogen

Gene Name	PRKY
Alternative Names	PRKY; Serine/threonine-protein kinase PRKY
Gene ID	5616.0
SwissProt ID	O43930.The antiserum was produced against synthesized peptide derived from human PRKY. AA range:61-110

Application

Dilution Ratio	WB 1:500-1:2000, IHC-P 1:100-1:300, ELISA 1:20000, IF-P/IF-F/ICC/IF 1:50-200
Molecular Weight	34kDa

Product Name: PRKY Rabbit Polyclonal Antibody
Catalog #: APRab16501

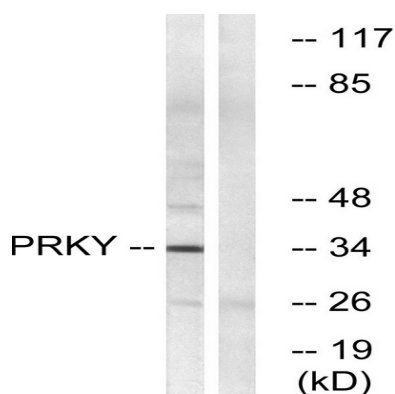


Background

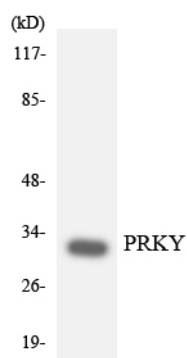
This gene is similar to the protein kinase, X-linked gene in the pseudoautosomal region of the X chromosome. The gene is classified as a transcribed pseudogene because it has lost a coding exon that results in all transcripts being candidates for nonsense-mediated decay (NMD) and unlikely to express a protein. Abnormal recombination between this gene and a related gene on chromosome X is a frequent cause of XX males and XY females. [provided by RefSeq, Jul 2010],

Research Area

Image Data



Western blot analysis of lysates from Jurkat cells, using PRKY Antibody. The lane on the right is blocked with the synthesized peptide.



Western blot analysis of the lysates from COLO205 cells using PRKY antibody.

Note

For research use only.