

---

**Product Name: Prefoldin 1 Rabbit Polyclonal Antibody****Catalog #: APRab16482**

For research use only.

**Summary**

<b>Description</b>	Rabbit polyclonal Antibody
<b>Host</b>	Rabbit
<b>Application</b>	WB,IHC,ICC/IF,ELISA
<b>Reactivity</b>	Human,Mouse
<b>Conjugation</b>	Unconjugated
<b>Modification</b>	Unmodified
<b>Isotype</b>	IgG
<b>Clonality</b>	Polyclonal
<b>Form</b>	Liquid
<b>Concentration</b>	1mg/ml
<b>Storage</b>	Aliquot and store at -20°C (valid for 12 months). Avoid freeze/thaw cycles.
<b>Shipping</b>	Ice bags
<b>Buffer</b>	Liquid in PBS containing 50% glycerol, 0.5% protective protein and 0.02% New type preservative N.
<b>Purification</b>	Affinity purification

**Application**

<b>Dilution Ratio</b>	WB 1:500-1:2000,IHC 1:100-1:300,ICC/IF 1:50-1:200,ELISA 1:10000-1:20000
<b>Molecular Weight</b>	14kDa

**Antigen Information**

<b>Gene Name</b>	PFDN1
<b>Alternative Names</b>	PFDN1; PFD1; Prefoldin subunit 1
<b>Gene ID</b>	5201.0
<b>SwissProt ID</b>	O60925
<b>Immunogen</b>	The antiserum was produced against synthesized peptide derived from human PFDN1. AA range:1-50

**Background**

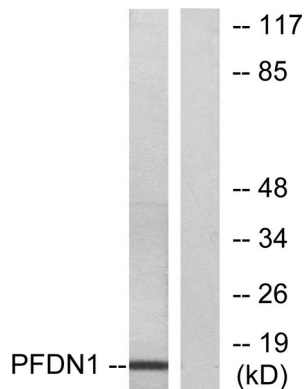
This gene encodes a member of the prefoldin beta subunit family. The encoded protein is one of six subunits of prefoldin, a

molecular chaperone complex that binds and stabilizes newly synthesized polypeptides, thereby allowing them to fold correctly. The complex, consisting of two alpha and four beta subunits, forms a double beta barrel assembly with six protruding coiled-coils. [provided by RefSeq, Jul 2008],function: Binds specifically to cytosolic chaperonin (c-CPN) and transfers target proteins to it. Binds to nascent polypeptide chain and promotes folding in an environment in which there are many competing pathways for nonnative proteins.,similarity: Belongs to the prefoldin subunit beta family.,subunit: Heterohexamer of two PFD-alpha type and four PFD-beta type subunits.,

## Research Area

Signal Transduction; Protein Trafficking; Chaperones; Other Chaperones; Epigenetics and Nuclear Signaling; Transcription; Transcription Factors

## Image Data



Western blot analysis of lysates from RAW264.7 cells, using PFDN1 Antibody. The lane on the right is blocked with the synthesized peptide.