
Product Name: PPP4R1L Rabbit Polyclonal Antibody**Catalog #: APRab16434**

For research use only.

Summary

Description	Rabbit polyclonal Antibody
Host	Rabbit
Application	WB,ELISA
Reactivity	Human,Monkey
Conjugation	Unconjugated
Modification	Unmodified
Isotype	IgG
Clonality	Polyclonal
Form	Liquid
Concentration	1mg/ml
Storage	Aliquot and store at -20°C (valid for 12 months). Avoid freeze/thaw cycles.
Shipping	Ice bags
Buffer	Liquid in PBS containing 50% glycerol, 0.5% protective protein and 0.02% New type preservative N.
Purification	Affinity purification

Application

Dilution Ratio	WB 1:500-1:2000,ELISA 1:5000-1:20000
Molecular Weight	50kDa

Antigen Information

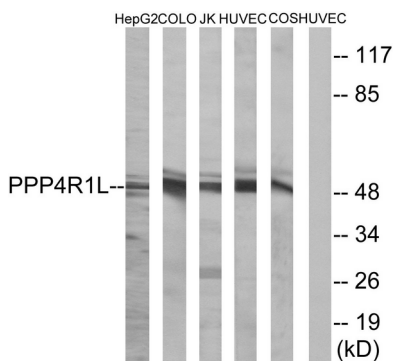
Gene Name	PPP4R1L
Alternative Names	PPP4R1L; C20orf192; Putative serine/threonine-protein phosphatase 4 regulatory subunit 1-like
Gene ID	55370.0
SwissProt ID	Q9P1A2
Immunogen	The antiserum was produced against synthesized peptide derived from human PPP4R1L. AA range:191-240

Background

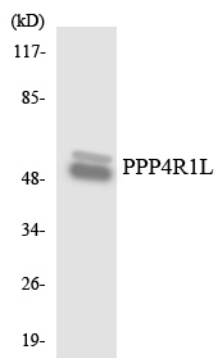
function:May be a regulatory subunit of serine/threonine-protein phosphatase 4.,similarity:Contains 4 HEAT repeats.,function:May be a regulatory subunit of serine/threonine-protein phosphatase 4.,similarity:Contains 4 HEAT repeats.,

Research Area

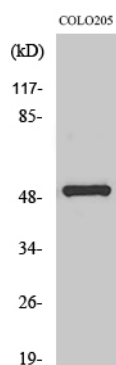
Image Data



Western blot analysis of lysates from COLO, HUVEC, HepG2, Jurkat, and COS cells, using PPP4R1L Antibody. The lane on the right is blocked with the synthesized peptide.



Western blot analysis of the lysates from HepG2 cells using PPP4R1L antibody.



Western Blot analysis of various cells using PPP4R1L Polyclonal Antibody