

Product Name: PPP2R3C Rabbit Polyclonal Antibody**Catalog #: APRab16429**

For research use only.

Summary

Description	Rabbit polyclonal Antibody
Host	Rabbit
Application	WB,IHC,ELISA
Reactivity	Human,Mouse,Rat
Conjugation	Unconjugated
Modification	Unmodified
Isotype	IgG
Clonality	Polyclonal
Form	Liquid
Concentration	1mg/ml
Storage	Aliquot and store at -20°C (valid for 12 months). Avoid freeze/thaw cycles.
Shipping	Ice bags
Buffer	Liquid in PBS containing 50% glycerol, 0.5% protective protein and 0.02% New type preservative N.
Purification	Affinity purification

Application

Dilution Ratio	WB 1:500-1:2000,IHC 1:50-1:300,ELISA 1:2000-1:20000
Molecular Weight	55kDa

Antigen Information

Gene Name	PPP2R3C PPP2R3C; C14orf10; G5PR; Serine/threonine-protein phosphatase 2A regulatory subunit B''
Alternative Names	subunit gamma; Protein phosphatase subunit G5PR; Rhabdomyosarcoma antigen MU-RMS-40.6A/6C
Gene ID	55012.0
SwissProt ID	Q969Q6
Immunogen	The antiserum was produced against synthesized peptide derived from human PPP2R3C. AA range:165-214

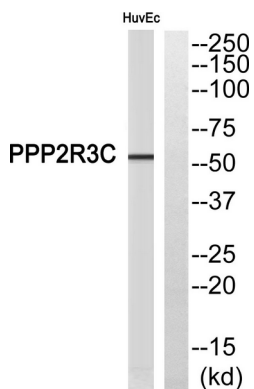
Background

This gene encodes a regulatory subunit of the serine/threonine phosphatase, protein phosphatase 2. This protein is localized to both nuclear and cytoplasmic regions depending on cell cycle phase. Homozygous conditional knockout mice for this gene exhibit reduced numbers and impaired proliferation of immune system B cells. This protein may regulate the expression of the P-glycoprotein ATP-binding cassette transporter through its phosphatase activity. Alternative splicing results in multiple transcript variants. [provided by RefSeq, Feb 2015],developmental stage:Expressed in fetal brain.,function:May regulate MCM3AP phosphorylation through phosphatase recruitment. May play a role in the activation-induced cell death of B-cells.,similarity:Contains 2 EF-hand domains.,subcellular location:Excluded from the nucleoli. Localization is cell cycle-dependent. Localizes to the cytoplasm during cytokinesis.,subunit:Interacts with MCM3AP/GANP (By similarity). Interacts with PPP5C, and the phosphatase 2A core enzyme composed of the PPP2CA catalytic subunit and the constant regulatory subunit PPP2R1A.,tissue specificity:Ubiquitously expressed in brain and other tissues.,

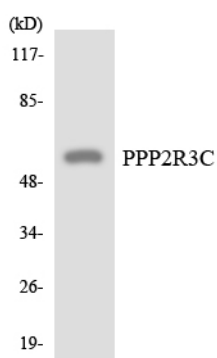
Research Area

Neuroscience; Neurotransmission; Calcium Signaling; Calcium Binding Proteins

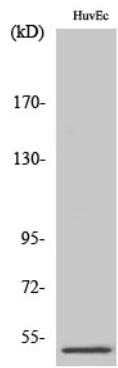
Image Data



Western blot analysis of PPP2R3C Antibody. The lane on the right is blocked with the PPP2R3C peptide.



Western blot analysis of the lysates from HepG2 cells using PPP2R3C antibody.



Western Blot analysis of various cells using PPP2R3C Polyclonal Antibody