

Product Name: PPP1R2P3 Rabbit Polyclonal Antibody**Catalog #: APRab16427**

For research use only.

Summary

Description	Rabbit polyclonal Antibody
Host	Rabbit
Application	IHC, ICC/IF, ELISA
Reactivity	Human, Rat, Mouse
Conjugation	Unconjugated
Modification	Unmodified
Isotype	IgG
Clonality	Polyclonal
Form	Liquid
Concentration	1mg/ml
Storage	Aliquot and store at -20°C (valid for 12 months). Avoid freeze/thaw cycles.
Shipping	Ice bags
Buffer	Liquid in PBS containing 50% glycerol, 0.5% protective protein and 0.02% New type preservative N.
Purification	Affinity purification

Application

Dilution Ratio IHC 1:100-1:300, ICC/IF 1:50-1:200, ELISA 1:20000-1:40000

Molecular Weight

Antigen Information

Gene Name	PPP1R2P3
Alternative Names	PPP1R2P3; Putative protein phosphatase inhibitor 2-like protein 3; Protein phosphatase 1; regulatory subunit 2 pseudogene 3
Gene ID	153743.0
SwissProt ID	Q6NXS1
Immunogen	Synthesized peptide derived from PPP1R2P3 . at AA range: 40-120

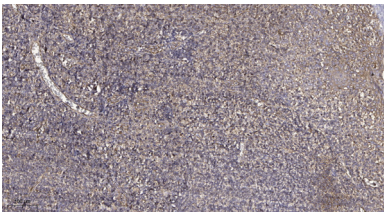
Background

caution: Could be the product of a pseudogene., function: Inhibitor of protein-phosphatase 1., similarity: Belongs to the protein

phosphatase inhibitor 2 family,,caution:Could be the product of a pseudogene,,function:Inhibitor of protein-phosphatase 1,,similarity:Belongs to the protein phosphatase inhibitor 2 family,,

Research Area

Image Data



Immunohistochemical analysis of paraffin-embedded human tonsil. 1, Antibody was diluted at 1:200 (4° overnight) . 2, Tris-EDTA,pH9.0 was used for antigen retrieval. 3,Secondary antibody was diluted at 1:200 (room temperature, 30min) .