

Product Name: PPM1E Rabbit Polyclonal Antibody**Catalog #: APRab16419**

For research use only.

Summary

Description	Rabbit polyclonal Antibody
Host	Rabbit
Application	WB,ELISA
Reactivity	Human,Mouse,Rat
Conjugation	Unconjugated
Modification	Unmodified
Isotype	IgG
Clonality	Polyclonal
Form	Liquid
Concentration	1mg/ml
Storage	Aliquot and store at -20°C (valid for 12 months). Avoid freeze/thaw cycles.
Shipping	Ice bags
Buffer	Liquid in PBS containing 50% glycerol, and 0.02% New type preservative N.
Purification	Affinity purification

Application

Dilution Ratio	WB 1:500-1:2000,ELISA 1:5000-1:20000
Molecular Weight	84kDa

Antigen Information

Gene Name	PPM1E CAMKN KIAA1072 POPX1
Alternative Names	
Gene ID	
SwissProt ID	Q8WY54
Immunogen	Synthesized peptide derived from human protein . at AA range: 460-540

Background

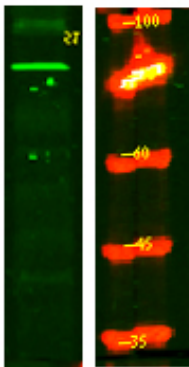
This gene encodes a member of the PPM family of serine/threonine-protein phosphatases. The encoded protein is localized to the nucleus and dephosphorylates and inactivates multiple substrates including serine/threonine-protein kinase PAK 1, 5'-AMP-activated protein kinase (AMPK) and the multifunctional calcium/calmodulin-dependent protein kinases. Alternatively

spliced transcript variants have been observed for this gene. [provided by RefSeq, May 2012],catalytic activity:A phosphoprotein + H(2)O = a protein + phosphate.,cofactor:Binds 2 magnesium or manganese ions per subunit.,function:Protein phosphatase that inactivates multifunctional CaM kinases such as CAMK4 and CAMK2 (By similarity). Dephosphorylates and inactivates PAK. May play a role in the inhibition of actin fiber stress breakdown and in morphological changes driven by TNK2/CDC42.,similarity:Belongs to the PP2C family.,similarity:Contains 1 PP2C-like domain.,subcellular location:A truncated form, major form, with the C-terminal part missing, is mostly found in the cytoplasm and a little in the nucleus. The full length, minor form, is found in the nucleus.,subunit:Heterotrimer. Interacts with PAX1 and ARHGEF6 (or ARHGEF7),,

Research Area

Cytoskeleton / ECM; Cytoskeleton; Microfilaments; Actin etc; Actin; Signal Transduction; Protein Phosphorylation; Ser / Thr Phosphatases; Cell Biology; Cell Cycle; Kinases/Phosphatases; Phosphatases

Image Data



Western Blot analysis of Hela lysis, using primary antibody at 1:1000 dilution. Secondary antibody was diluted at 1:10000