

---

**Product Name: PP2C $\kappa$  Rabbit Polyclonal Antibody****Catalog #: APRab16400**

For research use only.

**Summary**

<b>Description</b>	Rabbit polyclonal Antibody
<b>Host</b>	Rabbit
<b>Application</b>	WB,IHC,ICC/IF,ELISA
<b>Reactivity</b>	Human,Rat,Mouse
<b>Conjugation</b>	Unconjugated
<b>Modification</b>	Unmodified
<b>Isotype</b>	IgG
<b>Clonality</b>	Polyclonal
<b>Form</b>	Liquid
<b>Concentration</b>	1mg/ml
<b>Storage</b>	Aliquot and store at -20°C (valid for 12 months). Avoid freeze/thaw cycles.
<b>Shipping</b>	Ice bags
<b>Buffer</b>	Liquid in PBS containing 50% glycerol, 0.5% protective protein and 0.02% New type preservative N.
<b>Purification</b>	Affinity purification

**Application**

<b>Dilution Ratio</b>	WB 1:500-1:2000,IHC 1:100-1:300,ICC/IF 1:50-1:200,ELISA 1:20000-1:40000
<b>Molecular Weight</b>	45kDa

**Antigen Information**

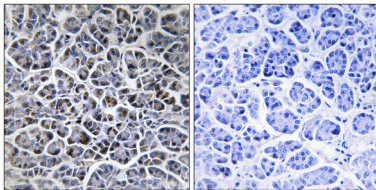
<b>Gene Name</b>	PPM1K PPM1K; PP2CM; Protein phosphatase 1K; mitochondrial; PP2C domain-containing protein
<b>Alternative Names</b>	phosphatase 1K; PP2C-like mitochondrial protein; PP2C-type mitochondrial phosphoprotein phosphatase; PTMP; Protein phosphatase 2C isoform kappa; PP2C-kappa
<b>Gene ID</b>	152926.0
<b>SwissProt ID</b>	Q8N3J5
<b>Immunogen</b>	The antiserum was produced against synthesized peptide derived from human PPM1K. AA range:205-254

## Background

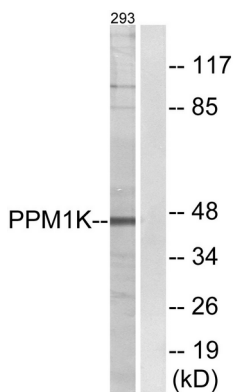
This gene encodes a member of the PPM family of Mn<sup>2+</sup>/Mg<sup>2+</sup>-dependent protein phosphatases. The encoded protein, essential for cell survival and development, is targeted to the mitochondria where it plays a key role in regulation of the mitochondrial permeability transition pore. [provided by RefSeq, Sep 2012],catalytic activity:A phosphoprotein + H(2)O = a protein + phosphate.,caution:Ref.9 has crystallized PPM1K in the presence of magnesium ions. However, PubMed:17336929 reported that no activity toward p-nitrophenylphosphate was seen in the absence of manganese ions and magnesium could not substitute for manganese.,cofactor:Binds 1 magnesium or manganese ion per subunit.,function:Regulates the mitochondrial permeability transition pore and is essential for cellular survival and development.,similarity:Belongs to the PP2C family.,similarity:Contains 1 PP2C-like domain.,

## Research Area

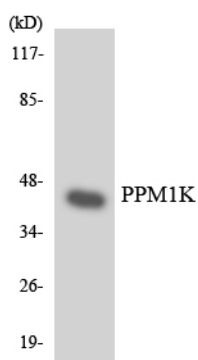
## Image Data



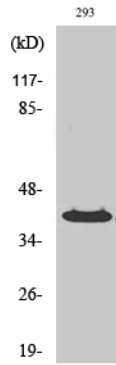
Immunohistochemistry analysis of paraffin-embedded human pancreas tissue, using PPM1K Antibody. The picture on the right is blocked with the synthesized peptide.



Western blot analysis of lysates from 293 cells, using PPM1K Antibody. The lane on the right is blocked with the synthesized peptide.



Western blot analysis of the lysates from HeLa cells using PPM1K antibody.



Western Blot analysis of various cells using PP2C $\kappa$  Polyclonal Antibody