

---

**Product Name: POTE15 Rabbit Polyclonal Antibody****Catalog #: APRab16383**

For research use only.

**Summary**

<b>Description</b>	Rabbit polyclonal Antibody
<b>Host</b>	Rabbit
<b>Application</b>	WB,IHC,ICC/IF,ELISA
<b>Reactivity</b>	Human,Rat,Mouse
<b>Conjugation</b>	Unconjugated
<b>Modification</b>	Unmodified
<b>Isotype</b>	IgG
<b>Clonality</b>	Polyclonal
<b>Form</b>	Liquid
<b>Concentration</b>	1mg/ml
<b>Storage</b>	Aliquot and store at -20°C (valid for 12 months). Avoid freeze/thaw cycles.
<b>Shipping</b>	Ice bags
<b>Buffer</b>	Liquid in PBS containing 50% glycerol, 0.5% protective protein and 0.02% New type preservative N.
<b>Purification</b>	Affinity purification

**Application**

<b>Dilution Ratio</b>	WB 1:500-1:2000,IHC 1:100-1:300,ICC/IF 1:50-1:200,ELISA 1:5000-1:10000
<b>Molecular Weight</b>	60kDa

**Antigen Information**

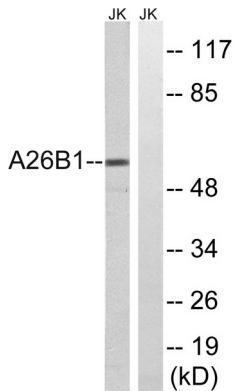
<b>Gene Name</b>	POTEB
<b>Alternative Names</b>	POTEB; A26B1; POTE15; POTE ankyrin domain family member B; ANKRD26-like family B member 1; Prostate; ovary, testis-expressed protein on chromosome 15; POTE-15
<b>Gene ID</b>	339010.0
<b>SwissProt ID</b>	Q6S5H4
<b>Immunogen</b>	The antiserum was produced against synthesized peptide derived from human A26B1. AA range:481-530

**Background**

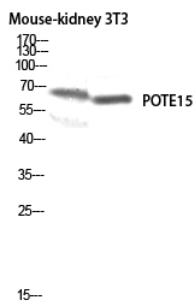
POTEB (POTE Ankyrin Domain Family Member B) is a Protein Coding gene. An important paralog of this gene is ANKRD18A.

## Research Area

## Image Data



Western blot analysis of lysates from Jurkat cells, using A26B1 Antibody. The lane on the right is blocked with the synthesized peptide.



Western blot analysis of Mouse-kidney 3T3 lysis using POTE15 antibody. Antibody was diluted at 1:500