

Product Name: POTE-14/22 Rabbit Polyclonal Antibody**Catalog #: APRab16382**

For research use only.

Summary

| | |
|----------------------|---|
| Description | Rabbit polyclonal Antibody |
| Host | Rabbit |
| Application | WB,IHC,ICC/IF,ELISA |
| Reactivity | Human,Rat,Mouse |
| Conjugation | Unconjugated |
| Modification | Unmodified |
| Isotype | IgG |
| Clonality | Polyclonal |
| Form | Liquid |
| Concentration | 1mg/ml |
| Storage | Aliquot and store at -20°C (valid for 12 months). Avoid freeze/thaw cycles. |
| Shipping | Ice bags |
| Buffer | Liquid in PBS containing 50% glycerol, 0.5% protective protein and 0.02% New type preservative N. |
| Purification | Affinity purification |

Application

| | |
|-------------------------|---|
| Dilution Ratio | WB 1:500-1:2000,IHC 1:100-1:300,ICC/IF 1:50-1:200,ELISA 1:20000-1:40000 |
| Molecular Weight | 61kDa |

Antigen Information

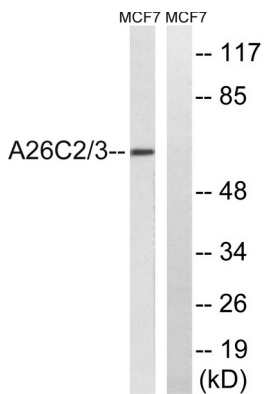
| | |
|--------------------------|--|
| Gene Name | POTEG/POTEH POTEH; A26C3; ACTBL1; POTE22; POTE ankyrin domain family member H; ANKRD26-like |
| Alternative Names | family C member 3; Prostate; ovary, testis-expressed protein on chromosome 22; POTE-22; POTEG; A26C2; POTE14; POTE ankyrin domain family member G; ANKRD26-like |
| Gene ID | 23784/404785 |
| SwissProt ID | Q6S545/Q6S5H5 |
| Immunogen | The antiserum was produced against synthesized peptide derived from human A26C2/3. AA range:178-227 |

Background

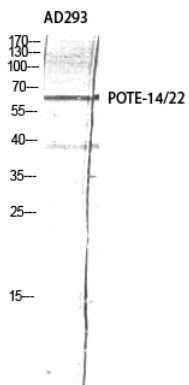
similarity:Belongs to the POTE family.,similarity:Contains 7 ANK repeats.,similarity:Belongs to the POTE family.,similarity:Contains 7 ANK repeats.,

Research Area

Image Data



Western blot analysis of lysates from MCF-7 cells, using A26C2/3 Antibody. The lane on the right is blocked with the synthesized peptide.



Western Blot analysis of AD293 using POTE-14/22 Polyclonal Antibody diluted at 1: 2000