
Product Name: POTE14/22 Rabbit Polyclonal Antibody**Catalog #: APRab16381**

For research use only.

Summary

Description	Rabbit polyclonal Antibody
Host	Rabbit
Application	WB,IHC,ICC/IF,ELISA
Reactivity	Human,Rat,Mouse
Conjugation	Unconjugated
Modification	Unmodified
Isotype	IgG
Clonality	Polyclonal
Form	Liquid
Concentration	1mg/ml
Storage	Aliquot and store at -20°C (valid for 12 months). Avoid freeze/thaw cycles.
Shipping	Ice bags
Buffer	Liquid in PBS containing 50% glycerol, 0.5% protective protein and 0.02% New type preservative N.
Purification	Affinity purification

Application

Dilution Ratio	WB 1:500-1:2000,IHC 1:100-1:300,ICC/IF 1:50-1:200,ELISA 1:20000-1:40000
Molecular Weight	67kDa

Antigen Information

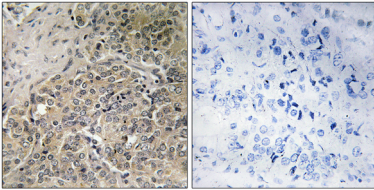
Gene Name	POTEG POTEG; A26C2; POTE14; POTE ankyrin domain family member G; ANKRD26-like family C
Alternative Names	member 2; Prostate; ovary, testis-expressed protein on chromosome 14; POTE-14; POTEH; A26C3; ACTBL1; POTE22; POTE ankyrin domain family member H; ANKRD26-like
Gene ID	404785/23784
SwissProt ID	Q6S5H5/Q6S545/A6NI47
Immunogen	The antiserum was produced against synthesized peptide derived from human POTEG. AA range:401-450

Background

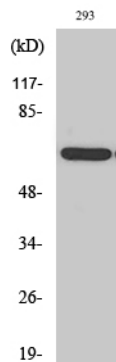
similarity:Belongs to the POTE family.,similarity:Contains 5 ANK repeats.,similarity:Belongs to the POTE family.,similarity:Contains 5 ANK repeats.,

Research Area

Image Data



Immunohistochemistry analysis of paraffin-embedded human prostate carcinoma, using A26C2/3 Antibody. The picture on the right is blocked with the synthesized peptide.



Western Blot analysis of various cells using POTE14/22 Polyclonal Antibody