
Product Name: POLR3A Rabbit Polyclonal Antibody**Catalog #: APRab16358**

For research use only.

Summary

Description	Rabbit polyclonal Antibody
Host	Rabbit
Application	WB,IHC,ICC/IF,ELISA
Reactivity	Human,Mouse,Monkey
Conjugation	Unconjugated
Modification	Unmodified
Isotype	IgG
Clonality	Polyclonal
Form	Liquid
Concentration	1mg/ml
Storage	Aliquot and store at -20°C (valid for 12 months). Avoid freeze/thaw cycles.
Shipping	Ice bags
Buffer	Liquid in PBS containing 50% glycerol, 0.5% protective protein and 0.02% New type preservative N.
Purification	Affinity purification

Application

Dilution Ratio	WB 1:500-1:2000,IHC 1:100-1:300,ICC/IF 1:50-1:200,ELISA 1:20000-1:40000
Molecular Weight	156kDa

Antigen Information

Gene Name	POLR3A POLR3A; DNA-directed RNA polymerase III subunit RPC1; RNA polymerase III subunit C1;
Alternative Names	DNA-directed RNA polymerase III largest subunit; DNA-directed RNA polymerase III subunit A; RNA polymerase III 155 kDa subunit; RPC155; RNA polymerase III
Gene ID	11128.0
SwissProt ID	O14802
Immunogen	The antiserum was produced against synthesized peptide derived from human RPC1. AA range:31-80

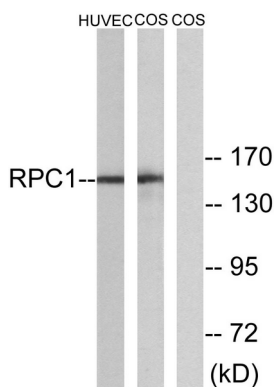
Background

The protein encoded by this gene is the catalytic component of RNA polymerase III, which synthesizes small RNAs. The encoded protein also acts as a sensor to detect foreign DNA and trigger an innate immune response. [provided by RefSeq, Aug 2011],catalytic activity:Nucleoside triphosphate + RNA(n) = diphosphate + RNA(n+1).,function:DNA-dependent RNA polymerase catalyzes the transcription of DNA into RNA using the four ribonucleoside triphosphates as substrates. Largest and catalytic core component of RNA polymerase III which synthesizes small RNAs, such as 5S rRNA and tRNAs. Forms the polymerase active center together with the second largest subunit. A single stranded DNA template strand of the promoter is positioned within the central active site cleft of Pol III. A bridging helix emanates from RPC1 and crosses the cleft near the catalytic site and is thought to promote translocation of Pol III by acting as a ratchet that moves the RNA-DNA hybrid through the active site by switching from straight to bent conformations at each step of nucleotide addition.,similarity:Belongs to the RNA polymerase beta' chain family.,subunit:Component of the RNA polymerase III (Pol III) complex consisting of 17 subunits.,

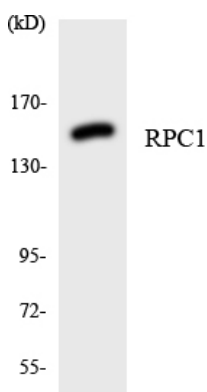
Research Area

Purine metabolism;Pyrimidine metabolism;RNA polymerase;Cytosolic DNA-sensing pathway;

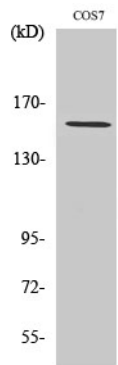
Image Data



Western blot analysis of lysates from COS and HUVEC cells, using RPC1 Antibody. The lane on the right is blocked with the synthesized peptide.



Western blot analysis of the lysates from 293 cells using RPC1 antibody.



Western Blot analysis of various cells using POLR3A Polyclonal Antibody.