

**Product Name: POLR2J1 Rabbit Polyclonal Antibody****Catalog #: APRab16357**

For research use only.

**Summary**

<b>Description</b>	Rabbit polyclonal Antibody
<b>Host</b>	Rabbit
<b>Application</b>	WB,IHC
<b>Reactivity</b>	Human,Mouse
<b>Conjugation</b>	Unconjugated
<b>Modification</b>	Unmodified
<b>Isotype</b>	IgG
<b>Clonality</b>	Polyclonal
<b>Form</b>	Liquid
<b>Concentration</b>	1mg/ml
<b>Storage</b>	Aliquot and store at -20°C (valid for 12 months). Avoid freeze/thaw cycles.
<b>Shipping</b>	Ice bags
<b>Buffer</b>	Liquid in PBS containing 50% glycerol, 0.5% protective protein and 0.02% New type preservative N.
<b>Purification</b>	Affinity purification

**Application**

<b>Dilution Ratio</b>	WB 1:500-1:2000,IHC 1:50-1:300
<b>Molecular Weight</b>	20kDa

**Antigen Information**

<b>Gene Name</b>	POLR2J POLR2J; POLR2J1; DNA-directed RNA polymerase II subunit RPB11-a; RNA polymerase II
<b>Alternative Names</b>	subunit B11-a; RPB11a; DNA-directed RNA polymerase II subunit J-1; RNA polymerase II 13.3 kDa subunit
<b>Gene ID</b>	5439.0
<b>SwissProt ID</b>	P52435
<b>Immunogen</b>	The antiserum was produced against synthesized peptide derived from human RPB11. AA range:10-59

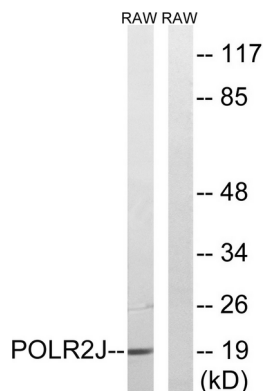
## Background

This gene encodes a subunit of RNA polymerase II, the polymerase responsible for synthesizing messenger RNA in eukaryotes. The product of this gene exists as a heterodimer with another polymerase subunit; together they form a core subassembly unit of the polymerase. Two similar genes are located nearby on chromosome 7q22.1 and a pseudogene is found on chromosome 7p13. [provided by RefSeq, Jul 2008],function:DNA-dependent RNA polymerase catalyzes the transcription of DNA into RNA using the four ribonucleoside triphosphates as substrates. Component of RNA polymerase II which synthesizes mRNA precursors and many functional non-coding RNAs. Pol II is the central component of the basal RNA polymerase II transcription machinery. It is composed of mobile elements that move relative to each other. RPB11 is part of the core element with the central large cleft.,similarity:Belongs to the archaeal rpoL/eukaryotic RPB11/RPC19 RNA polymerase subunit family.,subunit:Component of the RNA polymerase II (Pol II) complex consisting of 12 subunits. Interacts with AATF.,tissue specificity:Ubiquitously expressed. High expression was found in heart and skeletal muscle.,

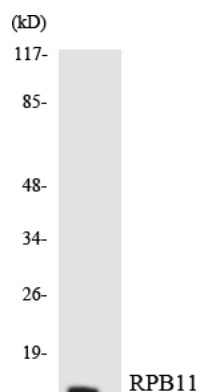
## Research Area

Purine metabolism;Pyrimidine metabolism;RNA polymerase;Huntington's disease;

## Image Data



Western blot analysis of lysates from RAW264.7 cells, using RPB11 Antibody. The lane on the right is blocked with the synthesized peptide.



Western blot analysis of the lysates from HeLa cells using RPB11 antibody.