
Product Name: PMCH Rabbit Polyclonal Antibody**Catalog #: APRab16300**

For research use only.

Summary

Description	Rabbit polyclonal Antibody
Host	Rabbit
Application	IHC, ICC/IF, ELISA
Reactivity	Human, Mouse, Rat
Conjugation	Unconjugated
Modification	Unmodified
Isotype	IgG
Clonality	Polyclonal
Form	Liquid
Concentration	1mg/ml
Storage	Aliquot and store at -20°C (valid for 12 months). Avoid freeze/thaw cycles.
Shipping	Ice bags
Buffer	Liquid in PBS containing 50% glycerol, 0.5% protective protein and 0.02% New type preservative N.
Purification	Affinity purification

Application

Dilution Ratio IHC 1:50-1:200, ICC/IF 1:50-1:200, ELISA 1:10000-1:20000

Molecular Weight

Antigen Information

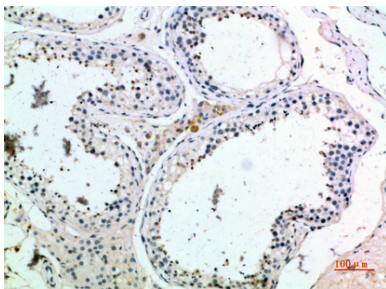
Gene Name	PMCH MCH Pro-MCH [Cleaved into: Neuropeptide-glycine-glutamic acid (NGE; Neuropeptide G-E);
Alternative Names	Neuropeptide-glutamic acid-isoleucine (NEI; Neuropeptide E-I); Melanin-concentrating hormone (MCH)]
Gene ID	5367.0
SwissProt ID	P20382
Immunogen	Synthetic peptide from human protein at AA range: 112-161

Background

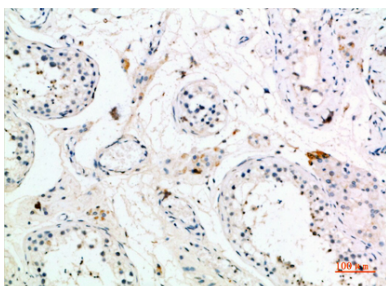
pro-melanin concentrating hormone(PMCH) Homo sapiens This gene encodes a preproprotein that is proteolytically processed to generate multiple protein products. These products include melanin-concentrating hormone (MCH), neuropeptide-glutamic acid-isoleucine (NEI), and neuropeptide-glycine-glutamic acid (NGE). Melanin-concentrating hormone is a 19-amino acid neuropeptide that stimulates hunger and may additionally regulate energy homeostasis, reproductive function, and sleep. Pseudogenes of this gene have been identified on chromosome 5. [provided by RefSeq, Jul 2015],function:MCH may act as a neurotransmitter or neuromodulator in a broad array of neuronal functions directed toward the regulation of goal-directed behavior, such as food intake, and general arousal. May also have a role in spermatocyte differentiation.,PTM:Differentially processed in the brain and in peripheral organs producing two neuropeptides; NEI and MCH. A third peptide, NGE, may also be produced. Preferential processing in neurons by prohormone convertase 2 (PC2) generates NEI. MCH is generated in neurons of the lateral hypothalamic area by several prohormone convertases including PC1/3, PC2 and PC5/6.,similarity:Belongs to the melanin-concentrating hormone family.,tissue specificity:Predominantly expressed in lateral hypothalamus, also detected in pallidum, neocortex and cerebellum. Also found in thymus, brown adipose tissue, duodenum and testis (spermatogonia, early spermatocytes and Sertoli cells). No expression in peripheral blood. In brain exclusively mature MCH and NEI peptides are present. In peripheral tissues a large product, encompassing the NEI and MCH domains of the precursor, is found predominantly.,

Research Area

Image Data



Immunohistochemical analysis of paraffin-embedded human-testis, antibody was diluted at 1:200



Immunohistochemical analysis of paraffin-embedded human-testis, antibody was diluted at 1:200