

**Product Name: PLS2 Rabbit Polyclonal Antibody****Catalog #: APRab16284**

For research use only.

**Summary**

<b>Description</b>	Rabbit polyclonal Antibody
<b>Host</b>	Rabbit
<b>Application</b>	WB,ELISA
<b>Reactivity</b>	Human,Rat,Mouse
<b>Conjugation</b>	Unconjugated
<b>Modification</b>	Unmodified
<b>Isotype</b>	IgG
<b>Clonality</b>	Polyclonal
<b>Form</b>	Liquid
<b>Concentration</b>	1mg/ml
<b>Storage</b>	Aliquot and store at -20°C (valid for 12 months). Avoid freeze/thaw cycles.
<b>Shipping</b>	Ice bags
<b>Buffer</b>	Liquid in PBS containing 50% glycerol, and 0.02% New type preservative N.
<b>Purification</b>	Affinity purification

**Application**

<b>Dilution Ratio</b>	WB 1:500-1:2000,ELISA 1:5000-1:20000
<b>Molecular Weight</b>	24kDa

**Antigen Information**

<b>Gene Name</b>	PLSCR2
<b>Alternative Names</b>	
<b>Gene ID</b>	57047.0
<b>SwissProt ID</b>	Q9NRY7
<b>Immunogen</b>	Synthesized peptide derived from human protein . at AA range: 90-170

**Background**

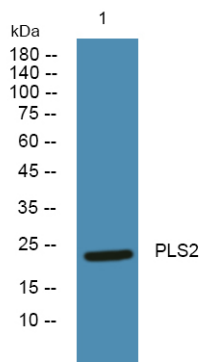
This gene encodes a member of the phospholipid scramblase family. Phospholipid scramblases are membrane proteins that mediate calcium-dependent, non-specific movement of plasma membrane phospholipids and phosphatidylserine exposure. The encoded protein contains a low affinity calcium binding motif and may play a role in blood coagulation and apoptosis.

Alternatively spliced transcript variants encoding multiple isoforms have been observed for this gene. [provided by RefSeq, Jan 2011],cofactor:Calcium.,function:May mediate accelerated ATP-independent bidirectional transbilayer migration of phospholipids upon binding calcium ions that results in a loss of phospholipid asymmetry in the plasma membrane. May play a central role in the initiation of fibrin clot formation, in the activation of mast cells and in the recognition of apoptotic and injured cells by the reticuloendothelial system.,online information:Scramblase entry,similarity:Belongs to the phospholipid scramblase family.,tissue specificity:Exclusively expressed in testis.,

## Research Area

Tumor immunology; Tumor-associated antigens; Cancer; Tumor biomarkers; Tumor antigens; Signal Transduction; Cytoskeleton / ECM; Cytoskeleton; Microfilaments; Actin etc; Actin Binding Proteins

## Image Data



Western blot analysis of lysates from PC12 cells, PLS2 Rabbit Polyclonal Antibody was diluted at 1:1000, 4°over night