

---

**Product Name: PLK-5 Rabbit Polyclonal Antibody****Catalog #: APRab16278**

For research use only.

**Summary**

<b>Description</b>	Rabbit polyclonal Antibody
<b>Host</b>	Rabbit
<b>Application</b>	WB,IHC
<b>Reactivity</b>	Human,Rat,Mouse
<b>Conjugation</b>	Unconjugated
<b>Modification</b>	Unmodified
<b>Isotype</b>	IgG
<b>Clonality</b>	Polyclonal
<b>Form</b>	Liquid
<b>Concentration</b>	1mg/ml
<b>Storage</b>	Aliquot and store at -20°C (valid for 12 months). Avoid freeze/thaw cycles.
<b>Shipping</b>	Ice bags
<b>Buffer</b>	Liquid in PBS containing 50% glycerol, 0.5% protective protein and 0.02% New type preservative N.
<b>Purification</b>	Affinity purification

**Application**

<b>Dilution Ratio</b>	WB 1:500-1:2000,IHC 1:50-1:300
<b>Molecular Weight</b>	55kDa

**Antigen Information**

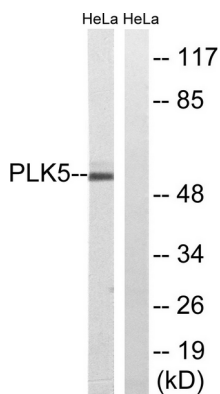
<b>Gene Name</b>	PLK5
<b>Alternative Names</b>	PLK5; PLK5P; FG060302; Inactive serine/threonine-protein kinase PLK5; Polo-like kinase 5; PLK-5
<b>Gene ID</b>	126520.0
<b>SwissProt ID</b>	Q496M5
<b>Immunogen</b>	The antiserum was produced against synthesized peptide derived from human PLK5. AA range:131-180

**Background**

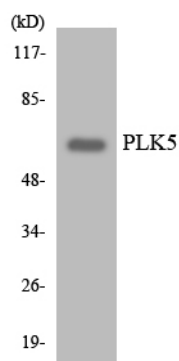
PLK5 (Polo Like Kinase 5) is a Protein Coding gene. Gene Ontology (GO) annotations related to PLK5 include transferase activity, transferring phosphorus-containing groups and protein kinase activity. An important paralog of PLK5 is PLK4.

## Research Area

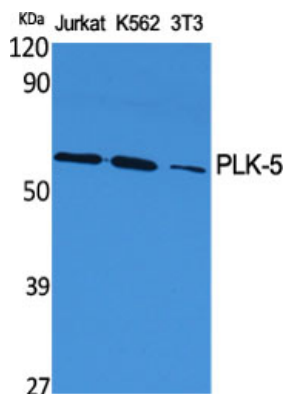
## Image Data



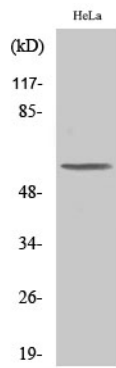
Western blot analysis of lysates from HeLa cells, using PLK5 Antibody. The lane on the right is blocked with the synthesized peptide.



Western blot analysis of the lysates from HeLa cells using PLK5 antibody.



Western Blot analysis of various cells using PLK-5 Polyclonal Antibody



Western Blot analysis of COLO205 cells using PLK-5 Polyclonal Antibody