
Product Name: PLCB4 Rabbit Polyclonal Antibody**Catalog #: APRab16252**

For research use only.

Summary

Description	Rabbit polyclonal Antibody
Host	Rabbit
Application	WB,ELISA
Reactivity	Human,Rat
Conjugation	Unconjugated
Modification	Unmodified
Isotype	IgG
Clonality	Polyclonal
Form	Liquid
Concentration	1mg/ml
Storage	Aliquot and store at -20°C (valid for 12 months). Avoid freeze/thaw cycles.
Shipping	Ice bags
Buffer	Liquid in PBS containing 50% glycerol, and 0.02% New type preservative N.
Purification	Affinity purification

Application

Dilution Ratio	WB 1:500-1:2000,ELISA 1:5000-1:20000
Molecular Weight	129kDa

Antigen Information

Gene Name	PLCB4
Alternative Names	
Gene ID	5332.0
SwissProt ID	Q15147
Immunogen	Synthesized peptide derived from part region of human protein

Background

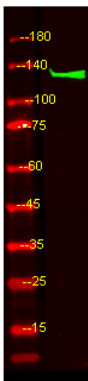
The protein encoded by this gene catalyzes the formation of inositol 1,4,5-trisphosphate and diacylglycerol from phosphatidylinositol 4,5-bisphosphate. This reaction uses calcium as a cofactor and plays an important role in the intracellular transduction of many extracellular signals in the retina. Multiple transcript variants encoding different isoforms have been

found for this gene. [provided by RefSeq, Feb 2010],alternative products:Additional isoforms seem to exist,catalytic activity:1-phosphatidyl-1D-myo-inositol 4,5-bisphosphate + H(2)O = 1D-myo-inositol 1,4,5-trisphosphate + diacylglycerol.,cofactor:Calcium.,function:The production of the second messenger molecules diacylglycerol (DAG) and inositol 1,4,5-trisphosphate (IP3) is mediated by activated phosphatidylinositol-specific phospholipase C enzymes. This form has a role in retina signal transduction.,similarity:Contains 1 C2 domain.,similarity:Contains 1 PI-PLC X-box domain.,similarity:Contains 1 PI-PLC Y-box domain.,tissue specificity:Preferentially expressed in the retina.,

Research Area

Inositol phosphate metabolism;Calcium;Chemokine;Phosphatidylinositol signaling system;Vascular smooth muscle contraction;WNT;WNT-T CELLGap junction;Long-term potentiation;Long-term depression;GnRH;Melanogenesis;Alzheimer's disease;Huntington's disease;

Image Data



Western Blot analysis of HEK293 lysis, using primary antibody at 1:1000 dilution. Secondary antibody was diluted at 1:10000