

Summary

Production Name	PKAy cat Rabbit Polyclonal Antibody
Description	Rabbit Polyclonal Antibody
Host	Rabbit
Application	WB,IHC-P,IF-P,IF-F,ICC/IF,ELISA
Reactivity	Human,Rat,Mouse

Performance

Conjugation	Unconjugated
Modification	Unmodified
Isotype	IgG
Clonality	Polyclonal
Form	Liquid
Storage	Store at 4°C short term. Aliquot and store at -20°C long term. Avoid freeze/thaw cycles.
Buffer	Liquid in PBS containing 50% glycerol, 0.5% protective protein and 0.02% New type preservative N.
Purification	Affinity purification

Immunogen

Gene Name	PRKACG
Alternative Names	PRKACG; cAMP-dependent protein kinase catalytic subunit gamma; PKA C-gamma
Gene ID	5568.0
SwissProt ID	P22612.The antiserum was produced against synthesized peptide derived from human KAPCG. AA range:1-50

Application

Dilution Ratio	WB 1:500-1:2000, IHC-P 1:100-1:300, ELISA 1:10000, IF-P/IF-F/ICC/IF 1:50-200
Molecular Weight	40kDa

Product Name: PKA γ cat Rabbit Polyclonal Antibody
Catalog #: APRab16188



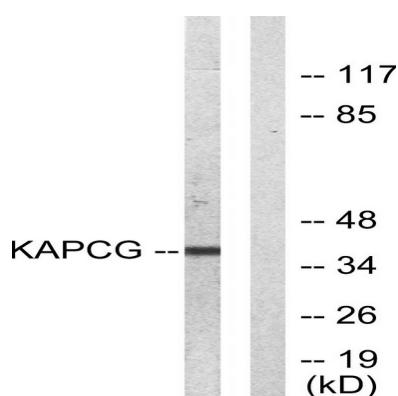
Background

Cyclic AMP-dependent protein kinase (PKA) consists of two catalytic subunits and a regulatory subunit dimer. This gene encodes the gamma form of its catalytic subunit. The gene is intronless and is thought to be a retrotransposon derived from the gene for the alpha form of the PKA catalytic subunit. [provided by RefSeq, Jul 2008],catalytic activity:ATP + a protein = ADP + a phosphoprotein.,enzyme regulation:Activated by cAMP.,function:Phosphorylates a large number of substrates in the cytoplasm and the nucleus.,similarity:Belongs to the protein kinase superfamily. AGC Ser/Thr protein kinase family. cAMP subfamily.,similarity:Contains 1 AGC-kinase C-terminal domain.,similarity:Contains 1 protein kinase domain.,subunit:A number of inactive tetrameric holoenzymes are produced by the combination of homo- or heterodimers of the different regulatory subunits associated with two catalytic subunits. cAMP causes the dissociation of the inactive holoenzyme into a dimer of regulatory subunits bound to four cAMP and two free monomeric catalytic subunits.,tissue specificity:Testis specific. But important tissues such as brain and ovary have not been analyzed for the content of transcript.,

Research Area

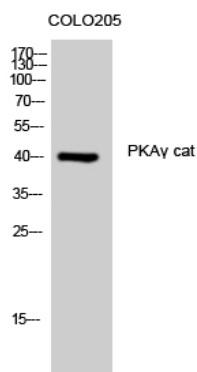
MAPK_ERK_Growth;MAPK_G_Protein;Calcium;Chemokine;Oocyte meiosis;Apoptosis_Inhibition;Apoptosis_Mitochondrial;Apoptosis_Overview;Vascular smooth muscle contraction;WNT;WNT-T CELLHedgehog;Gap junction;Long-term potentiation;Olfactory transduction;Taste transduction;Insulin_Receptor;GnRH;Progesterone-mediated oocyte maturation;Melanogenesis;Prion diseases;Vibrio cholerae infection;Dilated cardiomyopathy;

Image Data



Western blot analysis of lysates from COLO205 cells, using KAPCG Antibody. The lane on the right is blocked with the synthesized peptide.

Product Name: PKA γ cat Rabbit Polyclonal Antibody
Catalog #: APRab16188



Western Blot analysis of COLO205 cells using PKA γ cat Polyclonal Antibody

Note

For research use only.