
Product Name: Pitx1 Rabbit Polyclonal Antibody**Catalog #: APRab16167**

For research use only.

Summary

Description	Rabbit polyclonal Antibody
Host	Rabbit
Application	WB,IHC,ICC/IF,ELISA
Reactivity	Human,Mouse,Rat
Conjugation	Unconjugated
Modification	Unmodified
Isotype	IgG
Clonality	Polyclonal
Form	Liquid
Concentration	1mg/ml
Storage	Aliquot and store at -20°C (valid for 12 months). Avoid freeze/thaw cycles.
Shipping	Ice bags
Buffer	Liquid in PBS containing 50% glycerol, 0.5% protective protein and 0.02% New type preservative N.
Purification	Affinity purification

Application

Dilution Ratio	WB 1:500-1:2000,IHC 1:100-1:300,ICC/IF 1:50-1:200,ELISA 1:10000-1:20000
Molecular Weight	34kDa

Antigen Information

Gene Name	PITX1
Alternative Names	PITX1; BFT; PTX1; Pituitary homeobox 1; Hindlimb-expressed homeobox protein backfoot; Homeobox protein PITX1; Paired-like homeodomain transcription factor 1
Gene ID	5307.0
SwissProt ID	P78337
Immunogen	The antiserum was produced against synthesized peptide derived from human PITX1. AA range:121-170

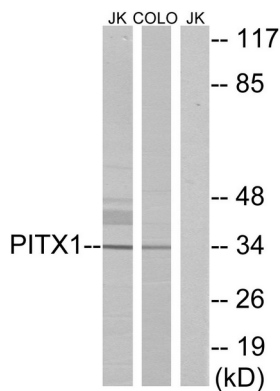
Background

This gene encodes a member of the RIEG/PITX homeobox family, which is in the bicoid class of homeodomain proteins. Members of this family are involved in organ development and left-right asymmetry. This protein acts as a transcriptional regulator involved in basal and hormone-regulated activity of prolactin. [provided by RefSeq, Jul 2008],function:May play a role in the development of anterior structures, and in particular, the brain and facies and in specifying the identity or structure of hindlimb.,similarity:Belongs to the paired homeobox family. Bicoid subfamily.,similarity:Contains 1 homeobox DNA-binding domain.,similarity:Contains 1 OAR domain.,

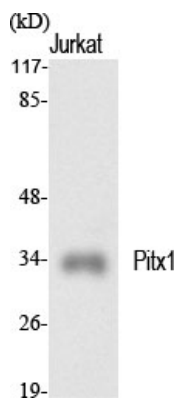
Research Area

Signal Transduction; Signaling Pathway; G Protein Signaling; Small G Proteins; Regulators; Epigenetics and Nuclear Signaling; Transcription; Cancer susceptibility; Tumor Suppressors

Image Data



Western blot analysis of lysates from Jurkat and COLO cells, using PITX1 Antibody. The lane on the right is blocked with the synthesized peptide.



Western Blot analysis of various cells using Pitx1 Polyclonal Antibody.

Western Blot analysis of Jurkat cells using Pitx1 Polyclonal Antibody.

