
Product Name: PIG-X Rabbit Polyclonal Antibody**Catalog #: APRab16144**

For research use only.

Summary

Description	Rabbit polyclonal Antibody
Host	Rabbit
Application	WB,IHC,ICC/IF,ELISA
Reactivity	Human,Rat,Mouse
Conjugation	Unconjugated
Modification	Unmodified
Isotype	IgG
Clonality	Polyclonal
Form	Liquid
Concentration	1mg/ml
Storage	Aliquot and store at -20°C (valid for 12 months). Avoid freeze/thaw cycles.
Shipping	Ice bags
Buffer	Liquid in PBS containing 50% glycerol, 0.5% protective protein and 0.02% New type preservative N.
Purification	Affinity purification

Application

Dilution Ratio	WB 1:500-1:2000,IHC 1:100-1:300,ICC/IF 1:50-1:200,ELISA 1:20000-1:40000
Molecular Weight	26kDa

Antigen Information

Gene Name	PIGX
Alternative Names	PIGX; Phosphatidylinositol-glycan biosynthesis class X protein; PIG-X
Gene ID	54965.0
SwissProt ID	Q8TBF5
Immunogen	The antiserum was produced against synthesized peptide derived from human PIGX. AA range:183-232

Background

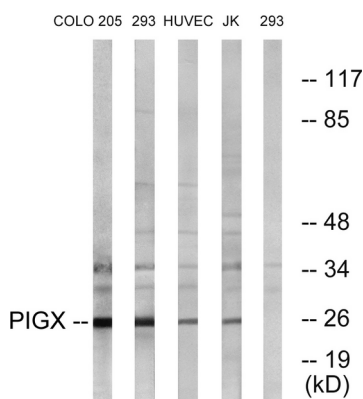
This gene encodes a type I transmembrane protein in the endoplasmic reticulum (ER). The protein is an essential component of

glycosylphosphatidylinositol-mannosyltransferase I, which transfers the first of the four mannoses in the GPI-anchor precursors during GPI-anchor biosynthesis. Studies in rat indicate that the protein is translated from a non-AUG translation initiation site. Alternative splicing results in multiple transcript variants. [provided by RefSeq, Oct 2009],function:Essential component of glycosylphosphatidylinositol-mannosyltransferase 1 which transfers the first of the 4 mannoses in the GPI-anchor precursors during GPI-anchor biosynthesis. Probably acts by stabilizing the mannosyltransferase PIGM.,pathway:Glycolipid biosynthesis; glycosylphosphatidylinositol-anchor biosynthesis.,PTM:N-glycosylated.,sequence caution:Unusual initiator. The initiator methionine is coded by a non-canonical CTG leucine codon.,similarity:Belongs to the PIGX family.,subunit:Interacts with PIGM.,

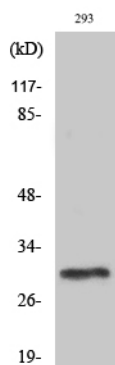
Research Area

Glycosylphosphatidylinositol(GPI)-anchor biosynthesis;

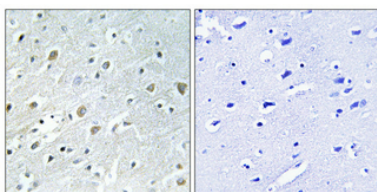
Image Data



Western blot analysis of lysates from 293, COLO, HUVEC, and Jurkat cells, using PIGX Antibody. The lane on the right is blocked with the synthesized peptide.



Western Blot analysis of various cells using PIG-X Polyclonal Antibody diluted at 1:1000



Immunohistochemical analysis of paraffin-embedded Human brain. Antibody was diluted at 1:100 (4° overnight). High-pressure and temperature Tris-EDTA, pH 8.0 was used for antigen retrieval. Negative control (right) obtained from antibody was pre-absorbed by immunogen peptide.