

Product Name: PIGC Rabbit Polyclonal Antibody**Catalog #: APRab16133**

For research use only.

Summary

Description	Rabbit polyclonal Antibody
Host	Rabbit
Application	WB,ELISA
Reactivity	Human,Mouse,Rat
Conjugation	Unconjugated
Modification	Unmodified
Isotype	IgG
Clonality	Polyclonal
Form	Liquid
Concentration	1mg/ml
Storage	Aliquot and store at -20°C (valid for 12 months). Avoid freeze/thaw cycles.
Shipping	Ice bags
Buffer	Liquid in PBS containing 50% glycerol, and 0.02% New type preservative N.
Purification	Affinity purification

Application

Dilution Ratio	WB 1:500-1:2000,ELISA 1:5000-1:20000
Molecular Weight	32kDa

Antigen Information

Gene Name	PIGC GPI2
Alternative Names	
Gene ID	5279.0
SwissProt ID	Q92535
Immunogen	Synthesized peptide derived from human protein . at AA range: 170-250

Background

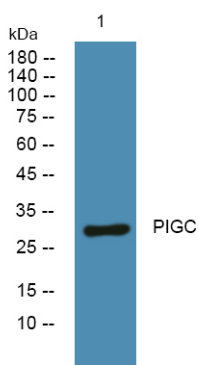
This gene encodes an endoplasmic reticulum associated protein that is involved in glycosylphosphatidylinositol (GPI) lipid anchor biosynthesis. The GPI lipid anchor is a glycolipid found on many blood cells and serves to anchor proteins to the cell surface. The encoded protein is one subunit of the GPI N-acetylglucosaminyl (GlcNAc) transferase that transfers GlcNAc to

phosphatidylinositol (PI) on the cytoplasmic side of the endoplasmic reticulum. Two alternatively spliced transcripts that encode the same protein have been found for this gene. A pseudogene on chromosome 11 has also been characterized. [provided by RefSeq, Jul 2008],catalytic activity:UDP-N-acetyl-D-glucosamine + 1-phosphatidyl-1D-myo-inositol = UDP + 6-(N-acetyl-alpha-D-glucosaminy)-1-phosphatidyl-1D-myo-inositol.,function:Part of the complex catalyzing the transfer of N-acetylglucosamine from UDP-N-acetylglucosamine to phosphatidylinositol, the first step of GPI biosynthesis.,online information:Phosphatidylinositol N-acetylglucosaminyltransferase subunit C8,pathway:Glycolipid biosynthesis; glycosylphosphatidylinositol-anchor biosynthesis.,similarity:Belongs to the PIGC family.,subunit:Associates with PIGA, PIGH, PIGP, PIGQ and DPM2. The latter is not essential for activity.,

Research Area

Glycosylphosphatidylinositol(GPI)-anchor biosynthesis;

Image Data



Western blot analysis of lysates from Jarkat cells, PIGC Rabbit Polyclonal Antibody was diluted at 1:1000, 4° over night