
Product Name: PHF3 Rabbit Polyclonal Antibody**Catalog #: APRab16066**

For research use only.

Summary

Description	Rabbit polyclonal Antibody
Host	Rabbit
Application	WB,IHC,ICC/IF,ELISA
Reactivity	Human,Mouse
Conjugation	Unconjugated
Modification	Unmodified
Isotype	IgG
Clonality	Polyclonal
Form	Liquid
Concentration	1mg/ml
Storage	Aliquot and store at -20°C (valid for 12 months). Avoid freeze/thaw cycles.
Shipping	Ice bags
Buffer	Liquid in PBS containing 50% glycerol, 0.5% protective protein and 0.02% New type preservative N.
Purification	Affinity purification

Application

Dilution Ratio	WB 1:500-1:2000,IHC 1:100-1:300,ICC/IF 1:50-1:200,ELISA 1:20000-1:40000
Molecular Weight	230kDa

Antigen Information

Gene Name	PHF3
Alternative Names	PHF3; KIAA0244; PHD finger protein 3
Gene ID	23469.0
SwissProt ID	Q92576
Immunogen	The antiserum was produced against synthesized peptide derived from human PHF3. AA range:1990-2039

Background

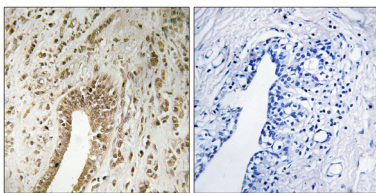
This gene encodes a member of a PHD finger-containing gene family. This gene may function as a transcription factor and may

be involved in glioblastomas development. Alternative splicing results in multiple transcript variants. [provided by RefSeq, Mar 2014],PTM:Phosphorylated upon DNA damage, probably by ATM or ATR.,similarity:Contains 1 PHD-type zinc finger.,similarity:Contains 1 TFIIIS central domain.,tissue specificity:Ubiquitous. Expression is significantly reduced or lost in glioblastomas, glioblastoma cell lines, anaplastic astrocytomas, and astrocytomas.,

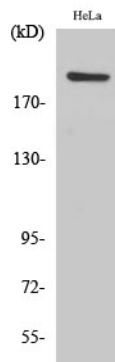
Research Area

Cancer; Tumor biomarkers

Image Data



Immunohistochemistry analysis of paraffin-embedded human breast carcinoma tissue, using PHF3 Antibody. The picture on the right is blocked with the synthesized peptide.



Western Blot analysis of various cells using PHF3 Polyclonal Antibody.