

Product Name: PHF1 Rabbit Polyclonal Antibody**Catalog #: APRab16062**

For research use only.

Summary

Description	Rabbit polyclonal Antibody
Host	Rabbit
Application	WB,IHC,ICC/IF,ELISA
Reactivity	Human,Mouse,Rat
Conjugation	Unconjugated
Modification	Unmodified
Isotype	IgG
Clonality	Polyclonal
Form	Liquid
Concentration	1mg/ml
Storage	Aliquot and store at -20°C (valid for 12 months). Avoid freeze/thaw cycles.
Shipping	Ice bags
Buffer	Liquid in PBS containing 50% glycerol, 0.5% protective protein and 0.02% New type preservative N.
Purification	Affinity purification

Application

Dilution Ratio	WB 1:500-1:2000,IHC 1:100-1:300,ICC/IF 1:50-1:200,ELISA 1:5000-1:20000
Molecular Weight	62kDa

Antigen Information

Gene Name	PHF1
Alternative Names	PHF1; PCL1; PHD finger protein 1; Protein PHF1; Polycomb-like protein 1; hPCL1
Gene ID	5252.0
SwissProt ID	O43189
Immunogen	The antiserum was produced against synthesized peptide derived from human PHF1. AA range:345-394

Background

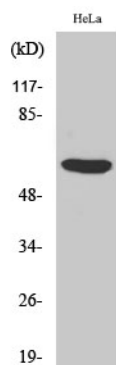
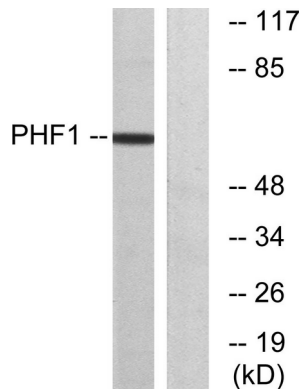
This gene encodes a Polycomb group protein. The protein is a component of a histone H3 lysine-27 (H3K27)-specific

methytransferase complex, and functions in transcriptional repression of homeotic genes. The protein is also recruited to double-strand breaks, and reduced protein levels results in X-ray sensitivity and increased homologous recombination. Multiple transcript variants encoding different isoforms have been found for this gene. [provided by RefSeq, May 2009],function:Transcriptional repressor. May promote methylation of histone H3 on 'Lys-27' by the PRC2/EED-EZH2 complex.,similarity:Contains 2 PHD-type zinc fingers.,subcellular location:Localizes specifically to the promoters of numerous target genes.,subunit:Interacts with CHMP1 (By similarity). Interacts with the PRC2 complex.,tissue specificity:Highest levels in heart, skeletal muscle, and pancreas, lower levels in brain, placenta, lung, liver and kidney.,

Research Area

Chromatin Remodeling; Polycomb Silencing; PRC2; Epigenetics and Nuclear Signaling; Transcription; Other factors

Image Data



Western Blot analysis of various cells using PHF1 Polyclonal Antibody cells nucleus extracted by Minute TM Cytoplasmic and Nuclear Fractionation kit (SC-003, Invent biotech, MN, USA) .