
Product Name: PHACTR4 Rabbit Polyclonal Antibody**Catalog #: APRab16053**

For research use only.

Summary

Description	Rabbit polyclonal Antibody
Host	Rabbit
Application	WB,IHC,ELISA
Reactivity	Human,Rat,Mouse
Conjugation	Unconjugated
Modification	Unmodified
Isotype	IgG
Clonality	Polyclonal
Form	Liquid
Concentration	1mg/ml
Storage	Aliquot and store at -20°C (valid for 12 months). Avoid freeze/thaw cycles.
Shipping	Ice bags
Buffer	Liquid in PBS containing 50% glycerol, 0.5% protective protein and 0.02% New type preservative N.
Purification	Affinity purification

Application

Dilution Ratio	WB 1:500-1:2000,IHC 1:50-1:300,ELISA 1:2000-1:20000
Molecular Weight	80kDa

Antigen Information

Gene Name	PHACTR4
Alternative Names	PHACTR4; Phosphatase and actin regulator 4
Gene ID	65979.0
SwissProt ID	Q8IZ21
Immunogen	The antiserum was produced against synthesized peptide derived from human PHACTR4. AA range:363-412

Background

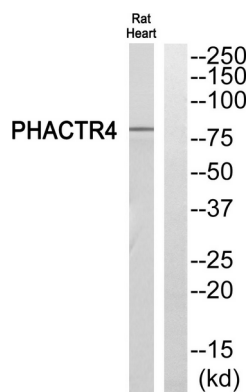
This gene encodes a member of the phosphatase and actin regulator (PHACTR) family. Other PHACTR family members have

been shown to inhibit protein phosphatase 1 (PP1) activity, and the homolog of this gene in the mouse has been shown to interact with actin and PP1. Multiple transcript variants encoding different isoforms have been found for this gene. [provided by RefSeq, Jul 2008],PTM:Phosphorylated upon DNA damage, probably by ATM or ATR.,similarity:Belongs to the phosphatase and actin regulator family.,similarity:Contains 3 RPEL repeats.,subunit:Binds PPP1CA and actin.,

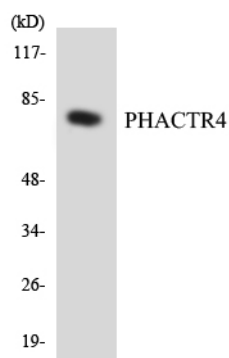
Research Area

Cytoskeleton / ECM; Cytoskeleton; Microfilaments; Actin etc; Actin Binding Proteins; Signal Transduction; Protein Phosphorylation; Ser / Thr Phosphatases

Image Data



Western blot analysis of PHACTR4 Antibody. The lane on the right is blocked with the PHACTR4 peptide.



Western blot analysis of the lysates from HeLa cells using PHACTR4 antibody.