

---

**Product Name: PFK-2 liv/tes Rabbit Polyclonal Antibody****Catalog #: APRab16014**

For research use only.

**Summary**

<b>Description</b>	Rabbit polyclonal Antibody
<b>Host</b>	Rabbit
<b>Application</b>	WB,IHC,ELISA
<b>Reactivity</b>	Human,Mouse,Rat
<b>Conjugation</b>	Unconjugated
<b>Modification</b>	Unmodified
<b>Isotype</b>	IgG
<b>Clonality</b>	Polyclonal
<b>Form</b>	Liquid
<b>Concentration</b>	1mg/ml
<b>Storage</b>	Aliquot and store at -20°C (valid for 12 months). Avoid freeze/thaw cycles.
<b>Shipping</b>	Ice bags
<b>Buffer</b>	Liquid in PBS containing 50% glycerol, 0.5% protective protein and 0.02% New type preservative N.
<b>Purification</b>	Affinity purification

**Application**

<b>Dilution Ratio</b>	WB 1:500-1:2000,IHC 1:50-1:300,ELISA 1:2000-1:20000
<b>Molecular Weight</b>	54kDa

**Antigen Information**

<b>Gene Name</b>	PFKFB1/PFKFB4
<b>Alternative Names</b>	PFKFB1; F6PK; PFRX; 6-phosphofructo-2-kinase/fructose-2, 6-bisphosphatase 1; 6PF-2-K/Fru-2,6-P2ase 1; PFK/FBPase 1; 6PF-2-K/Fru-2,6-P2ase liver isozyme; PFKFB4; 6-phosphofructo-2-kinase/fructose-2,6-bisphosphatase 4; 6PF-2-K/Fru-2,6-P2ase 4;
<b>Gene ID</b>	5207/5210
<b>SwissProt ID</b>	P16118/Q16877
<b>Immunogen</b>	The antiserum was produced against synthesized peptide derived from human PFKFB1/4. AA range:331-380

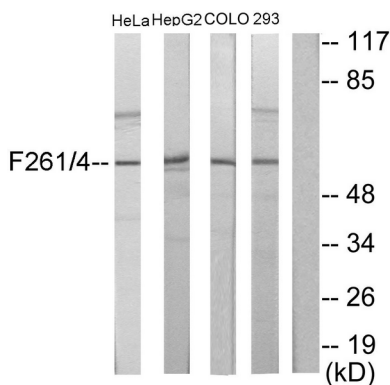
## Background

This gene encodes a member of the family of bifunctional 6-phosphofructo-2-kinase:fructose-2,6-biphosphatase enzymes. The enzyme forms a homodimer that catalyzes both the synthesis and degradation of fructose-2,6-biphosphate using independent catalytic domains. Fructose-2,6-biphosphate is an activator of the glycolysis pathway and an inhibitor of the gluconeogenesis pathway. Consequently, regulating fructose-2,6-biphosphate levels through the activity of this enzyme is thought to regulate glucose homeostasis. Multiple alternatively spliced transcript variants have been found for this gene. [provided by RefSeq, Nov 2012],catalytic activity:ATP + D-fructose 6-phosphate = ADP + beta-D-fructose 2,6-bisphosphate.,catalytic activity:Beta-D-fructose 2,6-bisphosphate + H(2)O = D-fructose 6-phosphate + phosphate.,enzyme regulation:Phosphorylation results in inhibition of the kinase activity.,function:Synthesis and degradation of fructose 2,6-bisphosphate.,similarity:In the C-terminal section; belongs to the phosphoglycerate mutase family.,subunit:Homodimer.,tissue specificity:Liver.,

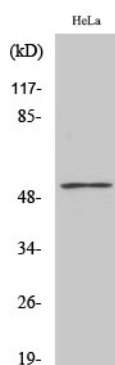
## Research Area

Fructose and mannose metabolism;

## Image Data



Western blot analysis of lysates from HeLa, HepG2, COLO205, and 293 cells, using PFKFB1/4 Antibody. The lane on the right is blocked with the synthesized peptide.



Western Blot analysis of various cells using PFK-2 liv/tes Polyclonal Antibody