

Product Name: Periphilin 1 Rabbit Polyclonal Antibody**Catalog #: APRab15976**

For research use only.

Summary

Description	Rabbit polyclonal Antibody
Host	Rabbit
Application	WB,IHC,ICC/IF,ELISA
Reactivity	Human,Mouse
Conjugation	Unconjugated
Modification	Unmodified
Isotype	IgG
Clonality	Polyclonal
Form	Liquid
Concentration	1mg/ml
Storage	Aliquot and store at -20°C (valid for 12 months). Avoid freeze/thaw cycles.
Shipping	Ice bags
Buffer	Liquid in PBS containing 50% glycerol, 0.5% protective protein and 0.02% New type preservative N.
Purification	Affinity purification

Application

Dilution Ratio	WB 1:500-1:2000,IHC 1:100-1:300,ICC/IF 1:50-1:200,ELISA 1:5000-1:10000
Molecular Weight	53kDa

Antigen Information

Gene Name	PPHLN1
Alternative Names	PPHLN1; HSPC206; HSPC232; Periphilin-1; Gastric cancer antigen Ga50
Gene ID	51535.0
SwissProt ID	Q8NEY8
Immunogen	The antiserum was produced against synthesized peptide derived from human PPHLN. AA range:71-120

Background

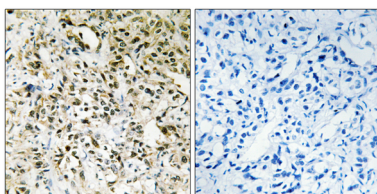
The protein encoded by this gene is one of the several proteins that become sequentially incorporated into the cornified cell

envelope during the terminal differentiation of keratinocyte at the outer layers of epidermis. This protein interacts with periplakin, which is known as a precursor of the cornified cell envelope. The cellular localization pattern and insolubility of this protein suggest that it may play a role in epithelial differentiation and contribute to epidermal integrity and barrier formation. Multiple alternatively spliced transcript variants encoding distinct isoforms have been observed. [provided by RefSeq, Jul 2008],function:Involved in epithelial differentiation and contributes to epidermal integrity and barrier formation.,PTM:Substrate of transglutaminase (in vitro),subcellular location:In undifferentiated keratinocytes expressed in speckle-type nuclear granules and at the nuclear membrane, but in the differentiated keratinocytes colocalized with periplakin at the cell periphery and at cell-cell junctions.,subunit:Homodimer. Interacts with PPL,.,tissue specificity:Ubiquitous.,

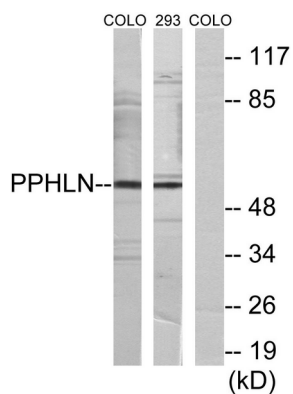
Research Area

Tags & Cell Markers; Cell Type Markers; Other Cell Types; Cell Biology; Cell Cycle; Cell differentiation

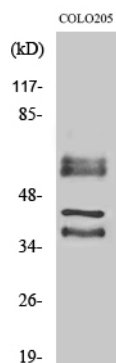
Image Data



Immunohistochemistry analysis of paraffin-embedded human liver carcinoma tissue, using PPHLN Antibody. The picture on the right is blocked with the synthesized peptide.



Western blot analysis of lysates from COLO and 293 cells, using PPHLN Antibody. The lane on the right is blocked with the synthesized peptide.



Western Blot analysis of various cells using Periphilin 1 Polyclonal Antibody