

## Summary

<b>Production Name</b>	PDK1 Rabbit Polyclonal Antibody
<b>Description</b>	Rabbit Polyclonal Antibody
<b>Host</b>	Rabbit
<b>Application</b>	WB,IHC-P
<b>Reactivity</b>	Human,Mouse,Rat

## Performance

<b>Conjugation</b>	Unconjugated
<b>Modification</b>	Unmodified
<b>Isotype</b>	IgG
<b>Clonality</b>	Polyclonal
<b>Form</b>	Liquid
<b>Storage</b>	Store at 4°C short term. Aliquot and store at -20°C long term. Avoid freeze/thaw cycles.
<b>Buffer</b>	Liquid in PBS containing 50% glycerol, 0.5% protective protein and 0.02% New type preservative N.
<b>Purification</b>	Affinity purification

## Immunogen

<b>Gene Name</b>	PDK1
<b>Alternative Names</b>	PDK1; PDHK1; [Pyruvate dehydrogenase [lipoamide]] kinase isozyme 1; mitochondrial; Pyruvate dehydrogenase kinase isoform 1
<b>Gene ID</b>	5163.0
<b>SwissProt ID</b>	Q15118.Synthesized peptide derived from PDK1 . at AA range: 80-160

## Application

<b>Dilution Ratio</b>	WB 1:500-2000, IHC-P 1:50-300
<b>Molecular Weight</b>	50kDa

**Product Name: PDK1 Rabbit Polyclonal Antibody**  
**Catalog #: AP Rab15916**



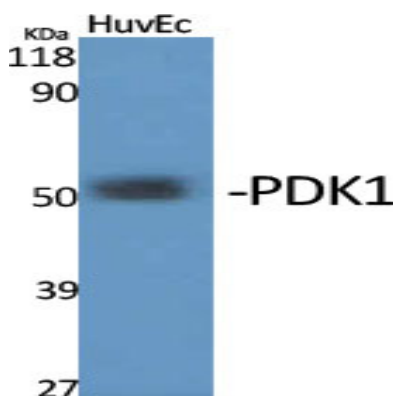
## Background

Pyruvate dehydrogenase (PDH) is a mitochondrial multienzyme complex that catalyzes the oxidative decarboxylation of pyruvate and is one of the major enzymes responsible for the regulation of homeostasis of carbohydrate fuels in mammals. The enzymatic activity is regulated by a phosphorylation/dephosphorylation cycle. Phosphorylation of PDH by a specific pyruvate dehydrogenase kinase (PDK) results in inactivation. Multiple alternatively spliced transcript variants have been found for this gene. [provided by RefSeq, Jun 2013], catalytic activity: ATP + [pyruvate dehydrogenase (acetyl-transferring)] = ADP + [pyruvate dehydrogenase (acetyl-transferring)] phosphate, function: Inhibits the mitochondrial pyruvate dehydrogenase complex by phosphorylation of the E1 alpha subunit, thus contributing to the regulation of glucose metabolism, similarity: Belongs to the PDK/BCKDK protein kinase family, similarity: Contains 1 histidine kinase domain, tissue specificity: Expressed predominantly in the heart,

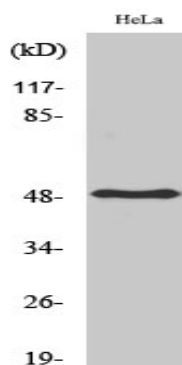
## Research Area

T\_Cell\_Receptor; Fc epsilon RI; Neurotrophin;

## Image Data



Western Blot analysis of various cells using PDK1 Polyclonal Antibody



Western Blot analysis of HeLa cells using PDK1 Polyclonal Antibody

**Product Name: PDK1 Rabbit Polyclonal Antibody**  
**Catalog #: APRab15916**

---



**Note**

For research use only.