
Product Name: PDE2A Rabbit Polyclonal Antibody**Catalog #: APRab15887**

For research use only.

Summary

Description	Rabbit polyclonal Antibody
Host	Rabbit
Application	WB,ELISA
Reactivity	Human,Mouse,Rat
Conjugation	Unconjugated
Modification	Unmodified
Isotype	IgG
Clonality	Polyclonal
Form	Liquid
Concentration	1mg/ml
Storage	Aliquot and store at -20°C (valid for 12 months). Avoid freeze/thaw cycles.
Shipping	Ice bags
Buffer	Liquid in PBS containing 50% glycerol, and 0.02% New type preservative N.
Purification	Affinity purification

Application

Dilution Ratio	WB 1:500-1:2000,ELISA 1:5000-1:20000
Molecular Weight	103kDa

Antigen Information

Gene Name	PDE2A
Alternative Names	
Gene ID	5138.0
SwissProt ID	O00408
Immunogen	Synthesized peptide derived from part region of human protein

Background

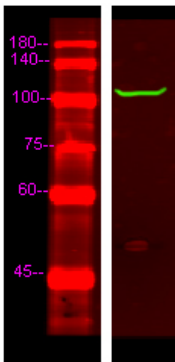
alternative products:Additional isoforms seem to exist. Experimental confirmation may be lacking for some isoforms,catalytic activity:Nucleoside 3',5'-cyclic phosphate + H(2)O = nucleoside 5'-phosphate.,function:Hydrolyzes both cyclic AMP (cAMP) and cyclic GMP (cGMP).,similarity:Belongs to the cyclic nucleotide phosphodiesterase family.,similarity:Contains 2 GAF

domains.,subunit:Homodimer.,tissue specificity:Expressed in brain and to a lesser extent in heart, placenta, lung, skeletal muscle, kidney and pancreas.,alternative products:Additional isoforms seem to exist. Experimental confirmation may be lacking for some isoforms,catalytic activity:Nucleoside 3',5'-cyclic phosphate + H(2)O = nucleoside 5'-phosphate.,function:Hydrolyzes both cyclic AMP (cAMP) and cyclic GMP (cGMP),similarity:Belongs to the cyclic nucleotide phosphodiesterase family.,similarity:Contains 2 GAF domains.,subunit:Homodimer.,tissue specificity:Expressed in brain and to a lesser extent in heart, placenta, lung, skeletal muscle, kidney and pancreas.,

Research Area

Purine metabolism;

Image Data



Western Blot analysis of HeLa lysis, using primary antibody at 1:1000 dilution. Secondary antibody was diluted at 1:10000