

Product Name: PC-PLD4 Rabbit Polyclonal Antibody**Catalog #: APRab15864**

For research use only.

Summary

Description	Rabbit polyclonal Antibody
Host	Rabbit
Application	WB,IHC
Reactivity	Human,Mouse,Rat
Conjugation	Unconjugated
Modification	Unmodified
Isotype	IgG
Clonality	Polyclonal
Form	Liquid
Concentration	1mg/ml
Storage	Aliquot and store at -20°C (valid for 12 months). Avoid freeze/thaw cycles.
Shipping	Ice bags
Buffer	Liquid in PBS containing 50% glycerol, 0.5% protective protein and 0.02% New type preservative N.
Purification	Affinity purification

Application

Dilution Ratio	WB 1:500-1:2000,IHC 1:50-1:300
Molecular Weight	50kDa

Antigen Information

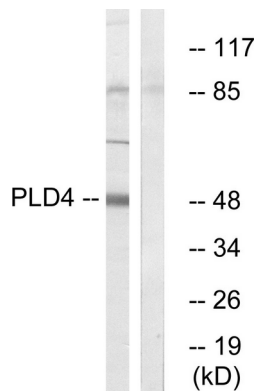
Gene Name	PLD4
Alternative Names	PLD4; C14orf175; Phospholipase D4; PLD 4; Choline phosphatase 4; Phosphatidylcholine-hydrolyzing phospholipase D4
Gene ID	122618.0
SwissProt ID	Q96BZ4
Immunogen	The antiserum was produced against synthesized peptide derived from human PLD4. AA range:457-506

Background

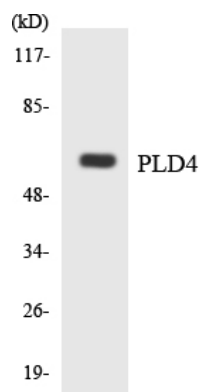
catalytic activity:A phosphatidylcholine + H(2)O = choline + a phosphatidate.,similarity:Belongs to the phospholipase D family.,similarity:Contains 2 PLD phosphodiesterase domains.,catalytic activity:A phosphatidylcholine + H(2)O = choline + a phosphatidate.,similarity:Belongs to the phospholipase D family.,similarity:Contains 2 PLD phosphodiesterase domains.,

Research Area

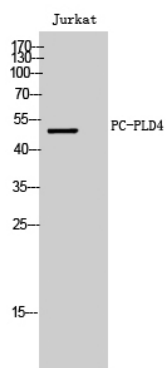
Image Data



Western blot analysis of lysates from Jurkat cells, using PLD4 Antibody. The lane on the right is blocked with the synthesized peptide.



Western blot analysis of the lysates from K562 cells using PLD4 antibody.



Western Blot analysis of Jurkat cells using PC-PLD4 Polyclonal Antibody