

## Summary

<b>Production Name</b>	PC-PLD3 Rabbit Polyclonal Antibody
<b>Description</b>	Rabbit Polyclonal Antibody
<b>Host</b>	Rabbit
<b>Application</b>	IHC-P,IF-P,IF-F,ICC/IF,ELISA
<b>Reactivity</b>	Human,Mouse,Rat

## Performance

<b>Conjugation</b>	Unconjugated
<b>Modification</b>	Unmodified
<b>Isotype</b>	IgG
<b>Clonality</b>	Polyclonal
<b>Form</b>	Liquid
<b>Storage</b>	Store at 4°C short term. Aliquot and store at -20°C long term. Avoid freeze/thaw cycles.
<b>Buffer</b>	Liquid in PBS containing 50% glycerol, 0.5% protective protein and 0.02% New type preservative N.
<b>Purification</b>	Affinity purification

## Immunogen

<b>Gene Name</b>	PLD3
<b>Alternative Names</b>	PLD3; Phospholipase D3; PLD 3; Choline phosphatase 3; HindIII K4L homolog; Hu-K4; Phosphatidylcholine-hydrolyzing phospholipase D3
<b>Gene ID</b>	23646.0
<b>SwissProt ID</b>	Q81V08. The antiserum was produced against synthesized peptide derived from human PLD3. AA range:326-375

## Application

<b>Dilution Ratio</b>	IHC-P 1:100-1:300, ELISA 1:5000, IF-P/IF-F/ICC/IF 1:50-200
<b>Molecular Weight</b>	

## Background

This gene encodes a member of the phospholipase D (PLD) family of enzymes that catalyze the hydrolysis of membrane phospholipids. The encoded protein is a single-pass type II membrane protein and contains two PLD phosphodiesterase domains. This protein influences processing of amyloid-beta precursor protein. Mutations in this gene are associated with Alzheimer disease risk. Alternatively spliced transcript variants encoding the same protein have been found for this gene.

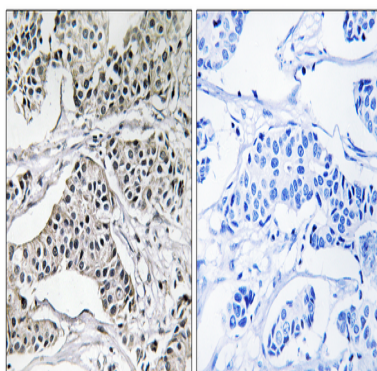
[provided by RefSeq, Apr 2014], catalytic activity: A phosphatidylcholine + H<sub>2</sub>O = choline + a

phosphatidate., PTM: Glycosylated., similarity: Belongs to the phospholipase D family., similarity: Contains 2 PLD

phosphodiesterase domains., tissue specificity: Widely expressed. Expresses at higher level in brain. Expresses at low level in corpus callosum, suggesting that it is highly expressed in neurons.,

## Research Area

## Image Data



Immunohistochemistry analysis of paraffin-embedded human breast carcinoma tissue, using PLD3 Antibody. The picture on the right is blocked with the synthesized peptide.

## Note

For research use only.