

Product Name: P-cadherin Rabbit Polyclonal Antibody**Catalog #: APRab15813**

For research use only.

Summary

| | |
|----------------------|---|
| Description | Rabbit polyclonal Antibody |
| Host | Rabbit |
| Application | WB,IHC,ICC/IF,ELISA |
| Reactivity | Human,Rat,Mouse |
| Conjugation | Unconjugated |
| Modification | Unmodified |
| Isotype | IgG |
| Clonality | Polyclonal |
| Form | Liquid |
| Concentration | 1mg/ml |
| Storage | Aliquot and store at -20°C (valid for 12 months). Avoid freeze/thaw cycles. |
| Shipping | Ice bags |
| Buffer | Liquid in PBS containing 50% glycerol, 0.5% protective protein and 0.02% New type preservative N. |
| Purification | Affinity purification |

Application

| | |
|-------------------------|--|
| Dilution Ratio | WB 1:500-1:2000,IHC 1:100-1:300,ICC/IF 1:50-1:200,ELISA 1:5000-1:20000 |
| Molecular Weight | 86kDa |

Antigen Information

| | |
|--------------------------|---|
| Gene Name | CDH3 |
| Alternative Names | CDH3; CDHP; Cadherin-3; Placental cadherin; P-cadherin |
| Gene ID | 1001.0 |
| SwissProt ID | P22223 |
| Immunogen | The antiserum was produced against synthesized peptide derived from human CDH3. AA range:51-100 |

Background

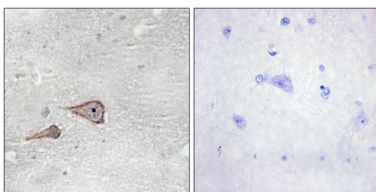
This gene encodes a classical cadherin of the cadherin superfamily. Alternative splicing results in multiple transcript variants, at

least one of which encodes a preproprotein that is proteolytically processed to generate the mature glycoprotein. This calcium-dependent cell-cell adhesion protein is comprised of five extracellular cadherin repeats, a transmembrane region and a highly conserved cytoplasmic tail. This gene is located in a gene cluster in a region on the long arm of chromosome 16 that is involved in loss of heterozygosity events in breast and prostate cancer. In addition, aberrant expression of this protein is observed in cervical adenocarcinomas. Mutations in this gene are associated with hypotrichosis with juvenile macular dystrophy and ectodermal dysplasia, ectrodactyly, and macular dystrophy syndrome (EEMS). [provided by RefSeq, Nov 2015],disease:Defects in CDH3 are the cause of ectodermal dysplasia with ectrodactyly and macular dystrophy (EEM) [MIM:225280]; also known as EEM syndrome, Albrectsen-Svendsen syndrome or Ohdo-Hirayama-Terawaki syndrome. Ectodermal dysplasia defines a heterogeneous group of disorders due to abnormal development of two or more ectodermal structures. EEM is an autosomal recessive condition characterized by features of ectodermal dysplasia such as sparse eyebrows and scalp hair, and selective tooth agenesis associated with macular dystrophy and ectrodactyly.,disease:Defects in CDH3 are the cause of hypotrichosis with juvenile macular dystrophy (HJMD) [MIM:601553]. HJMD is a rare autosomal recessive disorder characterized by early hair loss heralding severe degenerative changes of the retinal macula and culminating in blindness during the second to third decade of life.,function:Cadherins are calcium dependent cell adhesion proteins. They preferentially interact with themselves in a homophilic manner in connecting cells; cadherins may thus contribute to the sorting of heterogeneous cell types.,online information:Retina International's Scientific Newsletter,similarity:Contains 5 cadherin domains.,subunit:Interacts with CDCP1.,tissue specificity:Expressed in some normal epithelial tissues and in some carcinoma cell lines.,

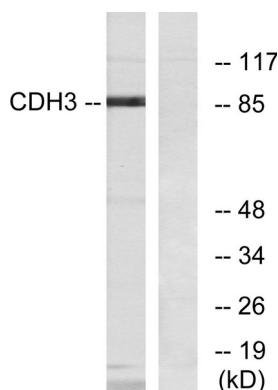
Research Area

Cell adhesion molecules (CAMs);

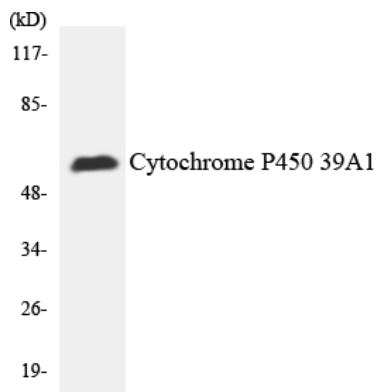
Image Data



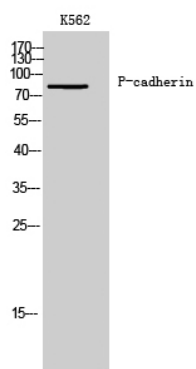
Immunohistochemistry analysis of paraffin-embedded human brain tissue, using CDH3 Antibody. The picture on the right is blocked with the synthesized peptide.



Western blot analysis of lysates from K562 cells, using CDH3 Antibody. The lane on the right is blocked with the synthesized peptide.



Western blot analysis of the lysates from HepG2 cells using Cytochrome P450 2C19 antibody.



Western Blot analysis of K562 cells using P-cadherin Polyclonal Antibody