

---

**Product Name: Pax-1 Rabbit Polyclonal Antibody****Catalog #: APRab15783**

For research use only.

**Summary**

<b>Description</b>	Rabbit polyclonal Antibody
<b>Host</b>	Rabbit
<b>Application</b>	WB,IHC,ICC/IF,ELISA
<b>Reactivity</b>	Human,Rat,Mouse
<b>Conjugation</b>	Unconjugated
<b>Modification</b>	Unmodified
<b>Isotype</b>	IgG
<b>Clonality</b>	Polyclonal
<b>Form</b>	Liquid
<b>Concentration</b>	1mg/ml
<b>Storage</b>	Aliquot and store at -20°C (valid for 12 months). Avoid freeze/thaw cycles.
<b>Shipping</b>	Ice bags
<b>Buffer</b>	Liquid in PBS containing 50% glycerol, 0.5% protective protein and 0.02% New type preservative N.
<b>Purification</b>	Affinity purification

**Application**

<b>Dilution Ratio</b>	WB 1:500-1:2000,IHC 1:100-1:300,ICC/IF 1:50-1:200,ELISA 1:5000-1:10000
<b>Molecular Weight</b>	36kDa

**Antigen Information**

<b>Gene Name</b>	PAX1
<b>Alternative Names</b>	PAX1; HUP48; Paired box protein Pax-1; HuP48
<b>Gene ID</b>	5075.0
<b>SwissProt ID</b>	P15863
<b>Immunogen</b>	The antiserum was produced against synthesized peptide derived from human Pax-1. AA range:318-367

**Background**

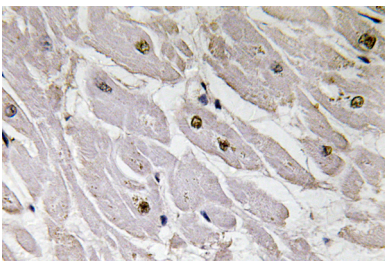
This gene is a member of the paired box (PAX) family of transcription factors. Members of the PAX family typically contain a

paired box domain and a paired-type homeodomain. These genes play critical roles during fetal development. This gene plays a role in pattern formation during embryogenesis and may be essential for development of the vertebral column. This gene is silenced by methylation in ovarian and cervical cancers and may be a tumor suppressor gene. Mutations in this gene are also associated with vertebral malformations. [provided by RefSeq, Mar 2012],function:This protein is a transcriptional activator. It may play a role in the formation of segmented structures of the embryo. May play an important role in the normal development of the vertebral column.,similarity:Contains 1 paired domain.,

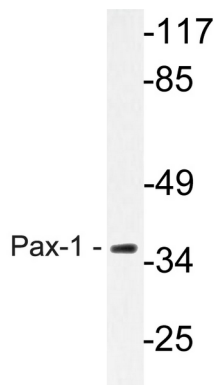
## Research Area

Domain Families; Developmental Families; PAX; Epigenetics and Nuclear Signaling; Transcription; Transcription Factors

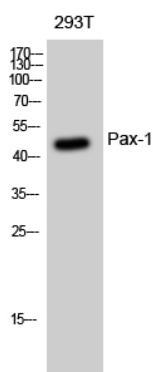
## Image Data



Immunohistochemistry analysis of Pax-1 antibody in paraffin-embedded human heart tissue.



Western blot analysis of lysate from HeLa cells, using Pax-1 antibody.



Western Blot analysis of 293T cells using Pax-1 Polyclonal Antibody diluted at 1 : 500.