

---

**Product Name: PARP-2 Rabbit Polyclonal Antibody****Catalog #: APRab15766**

For research use only.

**Summary**

<b>Description</b>	Rabbit polyclonal Antibody
<b>Host</b>	Rabbit
<b>Application</b>	WB,ELISA
<b>Reactivity</b>	Human,Mouse
<b>Conjugation</b>	Unconjugated
<b>Modification</b>	Unmodified
<b>Isotype</b>	IgG
<b>Clonality</b>	Polyclonal
<b>Form</b>	Liquid
<b>Concentration</b>	1mg/ml
<b>Storage</b>	Aliquot and store at -20°C (valid for 12 months). Avoid freeze/thaw cycles.
<b>Shipping</b>	Ice bags
<b>Buffer</b>	Liquid in PBS containing 50% glycerol, 0.5% protective protein and 0.02% New type preservative N.
<b>Purification</b>	Affinity purification

**Application**

<b>Dilution Ratio</b>	WB 1:500-1:2000,ELISA 1:20000-1:40000
<b>Molecular Weight</b>	75kDa

**Antigen Information**

<b>Gene Name</b>	PARP2
<b>Alternative Names</b>	PARP2; ADPRT2; ADPRTL2; Poly [ADP-ribose] polymerase 2; PARP-2; hPARP-2; ADP-ribosyltransferase diphtheria toxin-like 2; ARTD2; NAD(+) ADP-ribosyltransferase 2; ADPRT-2; Poly[ADP-ribose] synthase 2; pADPRT-2
<b>Gene ID</b>	10038.0
<b>SwissProt ID</b>	Q9UGN5
<b>Immunogen</b>	The antiserum was produced against synthesized peptide derived from human PARP2. AA range:151-200

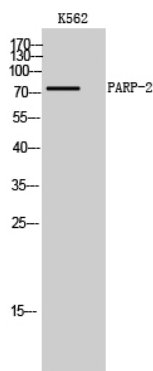
## Background

This gene encodes poly(ADP-ribosyl)transferase-like 2 protein, which contains a catalytic domain and is capable of catalyzing a poly(ADP-ribosyl)ation reaction. This protein has a catalytic domain which is homologous to that of poly (ADP-ribosyl) transferase, but lacks an N-terminal DNA binding domain which activates the C-terminal catalytic domain of poly (ADP-ribosyl) transferase. The basic residues within the N-terminal region of this protein may bear potential DNA-binding properties, and may be involved in the nuclear and/or nucleolar targeting of the protein. Two alternatively spliced transcript variants encoding distinct isoforms have been found. [provided by RefSeq, Jul 2008],catalytic activity:NAD(+) + (ADP-D-ribosyl)(n)-acceptor = nicotinamide + (ADP-D-ribosyl)(n+1)-acceptor.,function:Involved in the base excision repair (BER) pathway, by catalyzing the poly(ADP-ribosyl)ation of a limited number of acceptor proteins involved in chromatin architecture and in DNA metabolism. This modification follows DNA damages and appears as an obligatory step in a detection/signaling pathway leading to the reparation of DNA strand breaks.,PTM:Poly-ADP-ribosylated by PARP1.,similarity:Contains 1 PARP alpha-helical domain.,similarity:Contains 1 PARP catalytic domain.,subunit:Component of a base excision repair (BER) complex, containing at least XRCC1, PARP1, POLB and LIG3. Homo- and heterodimer with PARP1.,tissue specificity:Widely expressed, mainly in actively dividing tissues. The highest levels are in the brain, heart, pancreas, skeletal muscle and testis; also detected in kidney, liver, lung, placenta, ovary and spleen; levels are low in leukocytes, colon, small intestine, prostate and thymus.,

## Research Area

Base excision repair;

## Image Data



Western Blot analysis of K562 cells using PARP-2 Polyclonal Antibody.