
Product Name: Parkin Rabbit Polyclonal Antibody**Catalog #: APRab15759**

For research use only.

Summary

Description	Rabbit polyclonal Antibody
Host	Rabbit
Application	WB,IHC,ICC/IF,ELISA
Reactivity	Human,Mouse,Rat,Other
Conjugation	Unconjugated
Modification	Unmodified
Isotype	IgG
Clonality	Polyclonal
Form	Liquid
Concentration	1mg/ml
Storage	Aliquot and store at -20°C (valid for 12 months). Avoid freeze/thaw cycles.
Shipping	Ice bags
Buffer	Liquid in PBS containing 50% glycerol, 0.5% protective protein and 0.02% New type preservative N.
Purification	Affinity purification

Application

Dilution Ratio	WB 1:500-1:2000,IHC 1:100-1:300,ICC/IF 1:50-1:200,ELISA 1:5000-1:20000
Molecular Weight	55kDa

Antigen Information

Gene Name	PARK2
Alternative Names	PARK2; PRKN; E3 ubiquitin-protein ligase parkin; Parkinson juvenile disease protein 2; Parkinson disease protein 2
Gene ID	5071.0
SwissProt ID	O60260
Immunogen	The antiserum was produced against synthesized peptide derived from human Parkin. AA range:101-150

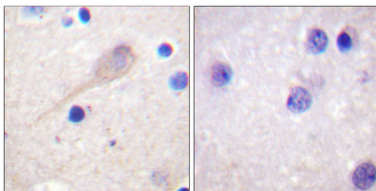
Background

The precise function of this gene is unknown; however, the encoded protein is a component of a multiprotein E3 ubiquitin ligase complex that mediates the targeting of substrate proteins for proteasomal degradation. Mutations in this gene are known to cause Parkinson disease and autosomal recessive juvenile Parkinson disease. Alternative splicing of this gene produces multiple transcript variants encoding distinct isoforms. Additional splice variants of this gene have been described but currently lack transcript support. [provided by RefSeq, Jul 2008],disease:Defects in PARK2 are a cause of Parkinson disease (PD) [MIM:168600]. PD is a complex, multifactorial disorder that typically manifests after the age of 50 years, although early-onset cases (before 50 years) are known. PD generally arises as a sporadic condition but is occasionally inherited as a simple mendelian trait.

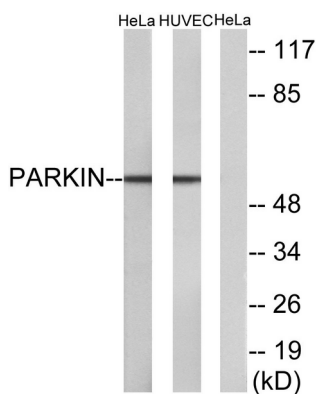
Research Area

Ubiquitin mediated proteolysis;Parkinson's disease;

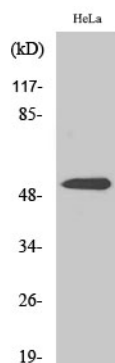
Image Data



Immunohistochemistry analysis of paraffin-embedded human brain tissue, using Parkin Antibody. The picture on the right is blocked with the synthesized peptide.



Western blot analysis of lysates from HeLa and HUVEC cells, using Parkin Antibody. The lane on the right is blocked with the synthesized peptide.



Western Blot analysis of various cells using Parkin Polyclonal Antibody