
Product Name: p70 S6 kinase β Rabbit Polyclonal Antibody**Catalog #: APRab15666**

For research use only.

Summary

| | |
|----------------------|---|
| Description | Rabbit polyclonal Antibody |
| Host | Rabbit |
| Application | WB,IHC,ICC/IF,ELISA |
| Reactivity | Human,Mouse |
| Conjugation | Unconjugated |
| Modification | Unmodified |
| Isotype | IgG |
| Clonality | Polyclonal |
| Form | Liquid |
| Concentration | 1mg/ml |
| Storage | Aliquot and store at -20°C (valid for 12 months). Avoid freeze/thaw cycles. |
| Shipping | Ice bags |
| Buffer | Liquid in PBS containing 50% glycerol, 0.5% protective protein and 0.02% New type preservative N. |
| Purification | Affinity purification |

Application

| | |
|-------------------------|--|
| Dilution Ratio | WB 1:500-1:2000,IHC 1:100-1:300,ICC/IF 1:50-1:200,ELISA 1:5000-1:10000 |
| Molecular Weight | 42kDa |

Antigen Information

| | |
|--------------------------|--|
| Gene Name | RPS6KB2 RPS6KB2; STK14B; Ribosomal protein S6 kinase beta-2; S6K-beta-2; S6K2; 70 kDa ribosomal |
| Alternative Names | protein S6 kinase 2; P70S6K2; p70-S6K 2; S6 kinase-related kinase; SRK; Serine/threonine-protein kinase 14B; p70 ribosomal S6 kinase beta; S6K-beta; p70 |
| Gene ID | 6199.0 |
| SwissProt ID | Q9UBS0 |
| Immunogen | The antiserum was produced against synthesized peptide derived from human p70 S6 Kinase beta. AA range:389-438 |

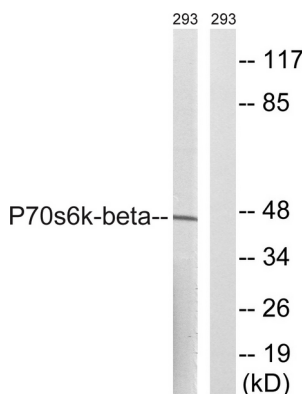
Background

ribosomal protein S6 kinase B2(RPS6KB2) Homo sapiens This gene encodes a member of the RSK (ribosomal S6 kinase) family of serine/threonine kinases. This kinase contains a kinase catalytic domain and phosphorylates the S6 ribosomal protein and eukaryotic translation initiation factor 4B (eIF4B). Phosphorylation of S6 leads to an increase in protein synthesis and cell proliferation. [provided by RefSeq, Jan 2015],catalytic activity:ATP + a protein = ADP + a phosphoprotein.,function:Phosphorylates specifically ribosomal protein S6.,PTM:Phosphorylated upon DNA damage, probably by ATM or ATR.,similarity:Belongs to the protein kinase superfamily.,similarity:Belongs to the protein kinase superfamily. AGC Ser/Thr protein kinase family. S6 kinase subfamily.,similarity:Contains 1 AGC-kinase C-terminal domain.,similarity:Contains 1 protein kinase domain.,

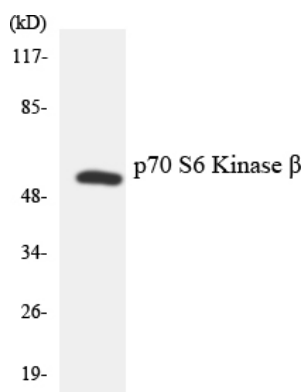
Research Area

Insulin Receptor; Regulates Angiogenesis; mTOR; B Cell Receptor; AMPK

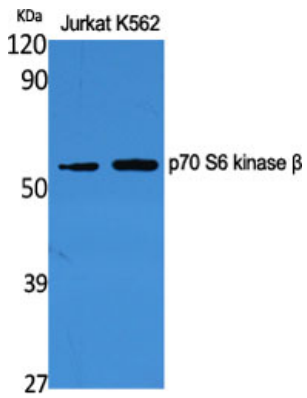
Image Data



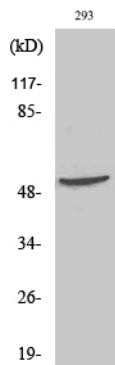
Western blot analysis of lysates from 293 cells, using p70 S6 Kinase beta Antibody. The lane on the right is blocked with the synthesized peptide.



Western blot analysis of the lysates from HUVEC cells using p70 S6 Kinase beta antibody.



Western Blot analysis of various cells using p70 S6 kinase β Polyclonal Antibody



Western Blot analysis of 293 cells using p70 S6 kinase β Polyclonal Antibody