
Product Name: P2Y10 Rabbit Polyclonal Antibody**Catalog #: APRab15606**

For research use only.

Summary

Description	Rabbit polyclonal Antibody
Host	Rabbit
Application	WB,ELISA
Reactivity	Human,Mouse
Conjugation	Unconjugated
Modification	Unmodified
Isotype	IgG
Clonality	Polyclonal
Form	Liquid
Concentration	1mg/ml
Storage	Aliquot and store at -20°C (valid for 12 months). Avoid freeze/thaw cycles.
Shipping	Ice bags
Buffer	Liquid in PBS containing 50% glycerol, and 0.02% New type preservative N.
Purification	Affinity purification

Application

Dilution Ratio	WB 1:500-1:2000,ELISA 1:5000-1:20000
Molecular Weight	37kDa

Antigen Information

Gene Name	P2RY10
Alternative Names	
Gene ID	27334.0
SwissProt ID	O00398
Immunogen	Synthesized peptide derived from human protein . at AA range: 80-160

Background

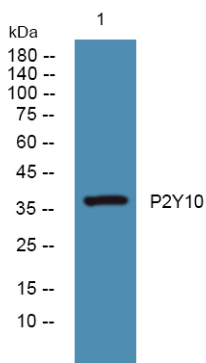
The protein encoded by this gene belongs to the family of G-protein coupled receptors that are preferentially activated by adenosine and uridine nucleotides. There is a pseudogene for this gene nearby on chromosome X. Multiple alternatively spliced transcripts have been observed. [provided by RefSeq, Apr 2016],developmental stage:Up-regulated during

promyelocytic cell differentiation along the monocytic pathway, but not during granulocytic differentiation.,function:Putative receptor for purines coupled to G-proteins.,similarity:Belongs to the G-protein coupled receptor 1 family.,tissue specificity:Weakly expressed in blood leukocytes.,

Research Area

Neuroactive ligand-receptor interaction;

Image Data



Western blot analysis of lysates from K562 cells, P2Y10 Rabbit Polyclonal Antibody was diluted at 1:1000, 4°over night