

**Product Name: P2RY8 Rabbit Polyclonal Antibody****Catalog #: APRab15604**

For research use only.

**Summary**

<b>Description</b>	Rabbit polyclonal Antibody
<b>Host</b>	Rabbit
<b>Application</b>	WB,ICC/IF,ELISA
<b>Reactivity</b>	Human,Rat,Mouse
<b>Conjugation</b>	Unconjugated
<b>Modification</b>	Unmodified
<b>Isotype</b>	IgG
<b>Clonality</b>	Polyclonal
<b>Form</b>	Liquid
<b>Concentration</b>	1mg/ml
<b>Storage</b>	Aliquot and store at -20°C (valid for 12 months). Avoid freeze/thaw cycles.
<b>Shipping</b>	Ice bags
<b>Buffer</b>	Liquid in PBS containing 50% glycerol, 0.5% protective protein and 0.02% New type preservative N.
<b>Purification</b>	Affinity purification

**Application**

<b>Dilution Ratio</b>	WB 1:500-1:2000,ICC/IF 1:200-1:1000,ELISA 1:10000-1:20000
<b>Molecular Weight</b>	41kDa

**Antigen Information**

<b>Gene Name</b>	P2RY8
<b>Alternative Names</b>	P2RY8; P2Y purinoceptor 8; P2Y8
<b>Gene ID</b>	286530.0
<b>SwissProt ID</b>	Q86VZ1
<b>Immunogen</b>	The antiserum was produced against synthesized peptide derived from human P2RY8. AA range:192-241

**Background**

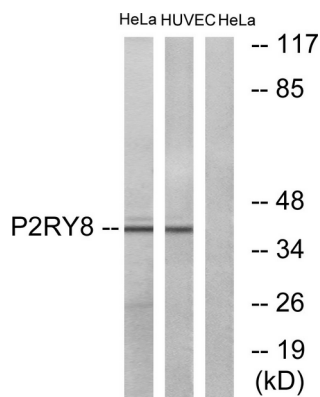
purinergic receptor P2Y8(P2RY8) Homo sapiens The protein encoded by this gene belongs to the family of G-protein coupled

receptors, that are preferentially activated by adenosine and uridine nucleotides. This gene is moderately expressed in undifferentiated HL60 cells, and is located on both chromosomes X and Y. [provided by RefSeq, Jul 2008],function:Probable receptor for purines coupled to G-proteins.,induction:Down-regulated during granulocytic regulation.,miscellaneous:The gene encoding for this protein is located in the pseudoautosomal region 1 (PAR1) of X and Y chromosomes.,similarity:Belongs to the G-protein coupled receptor 1 family.,tissue specificity:Barely detectable in normal blood leukocytes. Weaker expression was seen in heart, kidney and lung. Not detected in brain.,

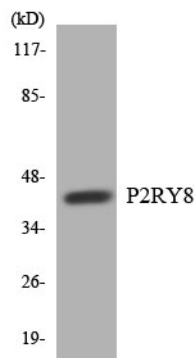
## Research Area

Neuroactive ligand-receptor interaction;

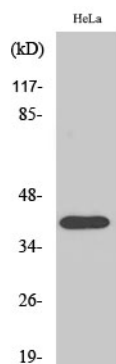
## Image Data



Western blot analysis of lysates from HeLa and HUVEC cells, using P2RY8 Antibody. The lane on the right is blocked with the synthesized peptide.



Western blot analysis of the lysates from COLO205 cells using P2RY8 antibody.



Western Blot analysis of various cells using P2RY8 Polyclonal Antibody diluted at 1:2000

