
Product Name: p16 Rabbit Polyclonal Antibody**Catalog #: APRab15579**

For research use only.

Summary

Description	Rabbit polyclonal Antibody
Host	Rabbit
Application	WB,ELISA
Reactivity	Human,Mouse
Conjugation	Unconjugated
Modification	Unmodified
Isotype	IgG
Clonality	Polyclonal
Form	Liquid
Concentration	1mg/ml
Storage	Aliquot and store at -20°C (valid for 12 months). Avoid freeze/thaw cycles.
Shipping	Ice bags
Buffer	Liquid in PBS containing 50% glycerol, 0.5% protective protein and 0.02% New type preservative N.
Purification	Affinity purification

Application

Dilution Ratio	WB 1:500-1:2000,ELISA 1:10000-1:20000
Molecular Weight	16kDa

Antigen Information

Gene Name	CDKN2A CDKN2A; CDKN2; MTS1; Cyclin-dependent kinase inhibitor 2A; isoforms 1/2/3; Cyclin-
Alternative Names	dependent kinase 4 inhibitor A; CDK4I; Multiple tumor suppressor 1; MTS-1; p16-INK4a; p16-INK4; p16INK4A
Gene ID	1029.0
SwissProt ID	P42771
Immunogen	The antiserum was produced against synthesized peptide derived from human p16 INK. AA range:10-59

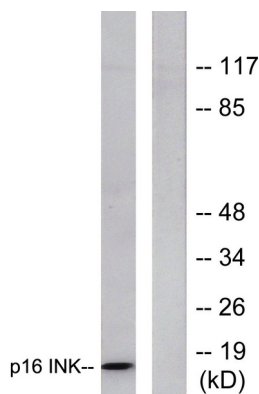
Background

p16-INK4A a cell-cycle regulatory protein that Interacts with CDK4 and CDK6, inhibiting their ability to interact with cyclins D. Inhibits the phosphorylation of the retinoblastoma protein by CDK4 or CDK6. Four alternatively spliced isoforms have been reported.

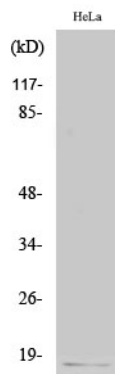
Research Area

Cell Biology

Image Data



Western blot analysis of lysates from HeLa cells, using p16 INK Antibody. The lane on the right is blocked with the synthesized peptide.



Western Blot analysis of various cells using p16 Polyclonal Antibody