

**Product Name: p115 Rabbit Polyclonal Antibody****Catalog #: APRab15565**

For research use only.

**Summary**

<b>Description</b>	Rabbit polyclonal Antibody
<b>Host</b>	Rabbit
<b>Application</b>	WB,ELISA
<b>Reactivity</b>	Human,Rat,Mouse
<b>Conjugation</b>	Unconjugated
<b>Modification</b>	Unmodified
<b>Isotype</b>	IgG
<b>Clonality</b>	Polyclonal
<b>Form</b>	Liquid
<b>Concentration</b>	1mg/ml
<b>Storage</b>	Aliquot and store at -20°C (valid for 12 months). Avoid freeze/thaw cycles.
<b>Shipping</b>	Ice bags
<b>Buffer</b>	Liquid in PBS containing 50% glycerol, 0.5% protective protein and 0.02% New type preservative N.
<b>Purification</b>	Affinity purification

**Application**

<b>Dilution Ratio</b>	WB 1:500-1:2000,ELISA 1:20000-1:40000
<b>Molecular Weight</b>	108kDa

**Antigen Information**

<b>Gene Name</b>	USO1
<b>Alternative Names</b>	USO1; VDP; General vesicular transport factor p115; Protein USO1 homolog; Transcytosis-associated protein; TAP; Vesicle-docking protein
<b>Gene ID</b>	8615.0
<b>SwissProt ID</b>	O60763
<b>Immunogen</b>	The antiserum was produced against synthesized peptide derived from human USO1. AA range:913-962

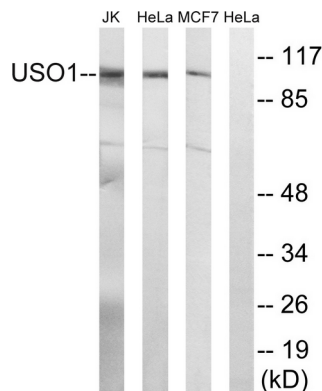
**Background**

The protein encoded by this gene is a peripheral membrane protein which recycles between the cytosol and the Golgi apparatus during interphase. It is regulated by phosphorylation: dephosphorylated protein associates with the Golgi membrane and dissociates from the membrane upon phosphorylation. Ras-associated protein 1 recruits this protein to coat protein complex II (COPII) vesicles during budding from the endoplasmic reticulum, where it interacts with a set of COPII vesicle-associated SNAREs to form a cis-SNARE complex that promotes targeting to the Golgi apparatus. Alternative splicing results in multiple transcript variants. [provided by RefSeq, Feb 2014],domain:Composed of a globular head, an elongated tail (coiled-coil) and a highly acidic C-terminal domain.,function:General vesicular transport factor required for intercisternal transport in the Golgi stack; it is required for transcytotic fusion and/or subsequent binding of the vesicles to the target membrane. May well act as a vesicular anchor by interacting with the target membrane and holding the vesicular and target membranes in proximity.,PTM:Phosphorylated in a cell cycle-specific manner; phosphorylated in interphase but not in mitotic cells. Dephosphorylated protein associates with the Golgi membrane; phosphorylation promotes dissociation.,similarity:Belongs to the VDP/USO1/EDE1 family.,subcellular location:Recycles between the cytosol and the Golgi apparatus during interphase.,

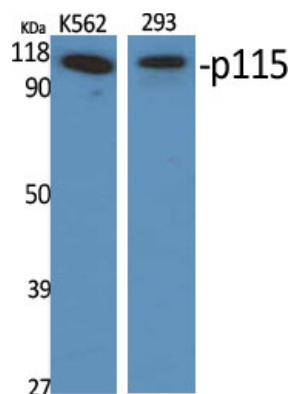
## Research Area

Signal Transduction

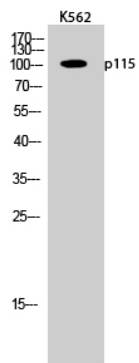
## Image Data



Western blot analysis of lysates from MCF-7, HeLa, and Jurkat cells, using USO1 Antibody. The lane on the right is blocked with the synthesized peptide.



Western Blot analysis of various cells using p115 Polyclonal Antibody diluted at 1:2000



Western Blot analysis of K562 cells using p115 Polyclonal Antibody diluted at 1 : 2000