
Product Name: OXSR1 Rabbit Polyclonal Antibody**Catalog #: APRab15556**

For research use only.

Summary

| | |
|----------------------|---|
| Description | Rabbit polyclonal Antibody |
| Host | Rabbit |
| Application | WB,ELISA |
| Reactivity | Human,Mouse |
| Conjugation | Unconjugated |
| Modification | Unmodified |
| Isotype | IgG |
| Clonality | Polyclonal |
| Form | Liquid |
| Concentration | 1mg/ml |
| Storage | Aliquot and store at -20°C (valid for 12 months). Avoid freeze/thaw cycles. |
| Shipping | Ice bags |
| Buffer | Liquid in PBS containing 50% glycerol, 0.5% protective protein and 0.02% New type preservative N. |
| Purification | Affinity purification |

Application

| | |
|-------------------------|---------------------------------------|
| Dilution Ratio | WB 1:500-1:2000,ELISA 1:20000-1:40000 |
| Molecular Weight | 50kDa |

Antigen Information

| | |
|--------------------------|--|
| Gene Name | OXSR1 |
| Alternative Names | OXSR1; KIAA1101; OSR1; Serine/threonine-protein kinase OSR1; Oxidative stress-responsive 1 protein |
| Gene ID | 9943.0 |
| SwissProt ID | O95747 |
| Immunogen | The antiserum was produced against synthesized peptide derived from human OXSR1. AA range:272-321 |

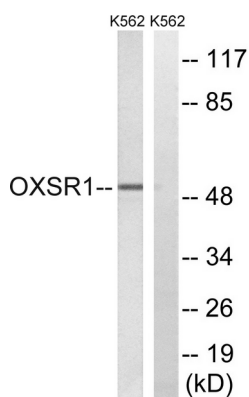
Background

The product of this gene belongs to the Ser/Thr protein kinase family of proteins. It regulates downstream kinases in response to environmental stress, and may play a role in regulating the actin cytoskeleton. [provided by RefSeq, Jul 2008],catalytic activity:ATP + a protein = ADP + a phosphoprotein.,cofactor:Magnesium.,enzyme regulation:By autophosphorylation on threonine.,function:Regulates downstream kinases in response to environmental stress. May also have a function in regulating the actin cytoskeleton.,PTM:Phosphorylated upon DNA damage, probably by ATM or ATR.,similarity:Belongs to the protein kinase superfamily. STE Ser/Thr protein kinase family. STE20 subfamily.,similarity:Contains 1 protein kinase domain.,subunit:Binds to and phosphorylates PAK1. Interacts with chloride channel proteins SLC12A6 isoform 2, SLC12A1 and SLC12A2 but not with SLC12A4 and SLC12A7, possibly establishing sensor/signaling modules that initiate the cellular response to environmental stress. Binds to and phosphorylates RELL1, RELL2 AND RELT.,tissue specificity:Ubiquitously expressed in all tissue examined.,

Research Area

Signal Transduction

Image Data



Western blot analysis of lysates from K562 cells, using OXSR1 Antibody. The lane on the right is blocked with the synthesized peptide.