

**Product Name: Oxr1 Rabbit Polyclonal Antibody****Catalog #: APRab15555**

For research use only.

**Summary**

<b>Description</b>	Rabbit polyclonal Antibody
<b>Host</b>	Rabbit
<b>Application</b>	WB,IHC,ICC/IF,ELISA
<b>Reactivity</b>	Human,Mouse,Rat
<b>Conjugation</b>	Unconjugated
<b>Modification</b>	Unmodified
<b>Isotype</b>	IgG
<b>Clonality</b>	Polyclonal
<b>Form</b>	Liquid
<b>Concentration</b>	1mg/ml
<b>Storage</b>	Aliquot and store at -20°C (valid for 12 months). Avoid freeze/thaw cycles.
<b>Shipping</b>	Ice bags
<b>Buffer</b>	Liquid in PBS containing 50% glycerol, 0.5% protective protein and 0.02% New type preservative N.
<b>Purification</b>	Affinity purification

**Application**

<b>Dilution Ratio</b>	WB 1:500-1:2000,IHC 1:100-1:300,ICC/IF 1:50-1:200,ELISA 1:20000-1:40000
<b>Molecular Weight</b>	85kDa

**Antigen Information**

<b>Gene Name</b>	OXR1
<b>Alternative Names</b>	OXR1; Nbla00307; Oxidation resistance protein 1
<b>Gene ID</b>	55074.0
<b>SwissProt ID</b>	Q8N573
<b>Immunogen</b>	The antiserum was produced against synthesized peptide derived from human OXR1. AA range:472-521

**Background**

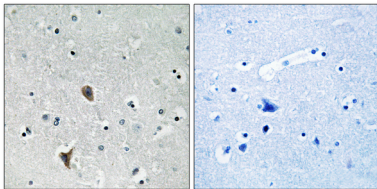
function:May be involved in protection from oxidative damage.,induction:By heat and oxidative stress.,PTM:Phosphorylated

upon DNA damage, probably by ATM or ATR.,similarity:Belongs to the OXR1 family.,similarity:Contains 1 GRAM domain.,similarity:Contains 1 LysM repeat.,similarity:Contains 1 TLD domain.,function:May be involved in protection from oxidative damage.,induction:By heat and oxidative stress.,PTM:Phosphorylated upon DNA damage, probably by ATM or ATR.,similarity:Belongs to the OXR1 family.,similarity:Contains 1 GRAM domain.,similarity:Contains 1 LysM repeat.,similarity:Contains 1 TLD domain.,

## Research Area

Cell Biology; Other Antibodies; Oxidative Stress

## Image Data



Immunohistochemistry analysis of paraffin-embedded human brain tissue, using OXR1 Antibody. The picture on the right is blocked with the synthesized peptide.