

Product Name: OTX1 Rabbit Polyclonal Antibody**Catalog #: APRab15540**

For research use only.

Summary

Description	Rabbit polyclonal Antibody
Host	Rabbit
Application	WB
Reactivity	Human, Mouse, Rat
Conjugation	Unconjugated
Modification	Unmodified
Isotype	IgG
Clonality	Polyclonal
Form	Liquid
Concentration	1mg/ml
Storage	Aliquot and store at -20°C (valid for 12 months). Avoid freeze/thaw cycles.
Shipping	Ice bags
Buffer	Liquid in PBS containing 50% glycerol, 0.5% protective protein and 0.61% New type preservative N.
Purification	Affinity purification

Application

Dilution Ratio	WB 1:500-1:2000
Molecular Weight	38kDa

Antigen Information

Gene Name	OTX1
Alternative Names	Homeobox protein OTX1 (Orthodenticle homolog 1)
Gene ID	5013.0
SwissProt ID	P32242
Immunogen	Synthesized peptide derived from human OTX1 AA range: 236-286

Background

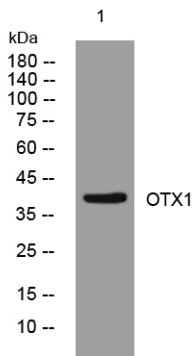
This gene encodes a member of the bicoid sub-family of homeodomain-containing transcription factors. The encoded protein acts as a transcription factor and may play a role in brain and sensory organ development. A similar protein in mouse is required

for proper brain and sensory organ development and can cause epilepsy. Alternative splicing results in multiple transcript variants. [provided by RefSeq, Jan 2015],developmental stage:Embryo.,function:Probably plays a role in the development of the brain and the sense organs. Can bind to the BCD target sequence (BTS): 5'-TCTAATCCC-3',similarity:Belongs to the paired homeobox family. Bicoid subfamily.,similarity:Contains 1 homeobox DNA-binding domain.,tissue specificity:Expressed in brain.,

Research Area

Neuroscience

Image Data



Western blot analysis of lysates from HCT116 cells, OTX1 Rabbit Polyclonal Antibody was diluted at 1:1000, 4°over night