

Summary

Production Name	OTUB2 Rabbit Polyclonal Antibody
Description	Rabbit Polyclonal Antibody
Host	Rabbit
Application	WB,IHC-P,IF-P,IF-F,ICC/IF,ELISA
Reactivity	Human,Mouse,Rat

Performance

Conjugation	Unconjugated
Modification	Unmodified
Isotype	IgG
Clonality	Polyclonal
Form	Liquid
Storage	Store at 4°C short term. Aliquot and store at -20°C long term. Avoid freeze/thaw cycles.
Buffer	Liquid in PBS containing 50% glycerol, 0.5% protective protein and 0.02% New type preservative N.
Purification	Affinity purification

Immunogen

Gene Name	OTUB2
Alternative Names	OTUB2; C14orf137; OTB2; OTU2; Ubiquitin thioesterase OTUB2; Deubiquitinating enzyme OTUB2; OTU domain-containing ubiquitin aldehyde-binding protein 2; Otubain-2; Ubiquitin-specific-processing protease OTUB2
Gene ID	78990.0
SwissProt ID	Q96DC9.The antiserum was produced against synthesized peptide derived from human OTUB2. AA range:133-182

Application

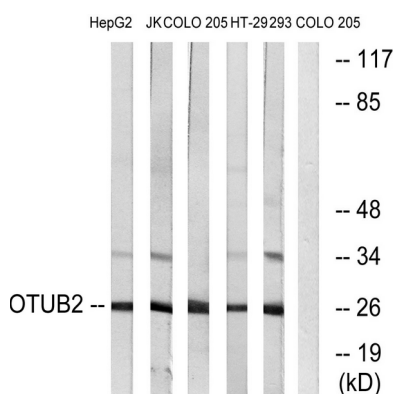
Dilution Ratio	WB 1:500-1:2000, IHC-P 1:100-1:300, ELISA 1:20000, IF-P/IF-F/ICC/IF 1:50-200
Molecular Weight	27kDa

Background

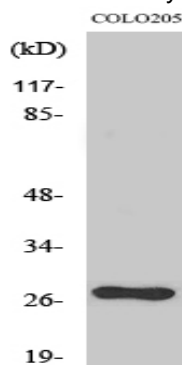
OTU deubiquitinase, ubiquitin aldehyde binding 2(OTUB2) Homo sapiens This gene encodes one of several deubiquitylating enzymes. Ubiquitin modification of proteins is needed for their stability and function; to reverse the process, deubiquitylating enzymes remove ubiquitin. This protein contains an OTU domain and binds Uba1 (ubiquitin aldehyde); an active cysteine protease site is present in the OTU domain. [provided by RefSeq, Aug 2011],function:Hydrolase that can remove conjugated ubiquitin from proteins in vitro and may therefore play an important regulatory role at the level of protein turnover by preventing degradation.,similarity:Belongs to the peptidase C65 family.,similarity:Contains 1 OTU domain.,tissue specificity:Widely expressed. Expressed at higher level in brain.,

Research Area

Image Data



Western blot analysis of lysates from COLO, HepG2, Jurkat, 293, and HT-29 cells, using OTUB2 Antibody. The lane on the right is blocked with the synthesized peptide.



Western Blot analysis of various cells using OTUB2 Polyclonal Antibody diluted at 1: 2000

Product Name: OTUB2 Rabbit Polyclonal Antibody
Catalog #: APRab15535



Note

For research use only.