

**Product Name: ORC1 Rabbit Polyclonal Antibody****Catalog #: APRab15495**

For research use only.

**Summary**

<b>Description</b>	Rabbit polyclonal Antibody
<b>Host</b>	Rabbit
<b>Application</b>	WB,ELISA
<b>Reactivity</b>	Human,Rat,Mouse
<b>Conjugation</b>	Unconjugated
<b>Modification</b>	Unmodified
<b>Isotype</b>	IgG
<b>Clonality</b>	Polyclonal
<b>Form</b>	Liquid
<b>Concentration</b>	1mg/ml
<b>Storage</b>	Aliquot and store at -20°C (valid for 12 months). Avoid freeze/thaw cycles.
<b>Shipping</b>	Ice bags
<b>Buffer</b>	Liquid in PBS containing 50% glycerol, 0.5% protective protein and 0.02% New type preservative N.
<b>Purification</b>	Affinity purification

**Application**

<b>Dilution Ratio</b>	WB 1:500-1:2000,ELISA 1:5000-1:10000
<b>Molecular Weight</b>	100,120kDa

**Antigen Information**

<b>Gene Name</b>	ORC1
<b>Alternative Names</b>	ORC1; ORC1L; PARC1; Origin recognition complex subunit 1; Replication control protein 1
<b>Gene ID</b>	4998.0
<b>SwissProt ID</b>	Q13415
<b>Immunogen</b>	The antiserum was produced against synthesized peptide derived from human ORC1L. AA range:331-380

**Background**

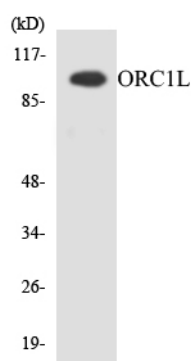
The origin recognition complex (ORC) is a highly conserved six subunits protein complex essential for the initiation of the DNA

replication in eukaryotic cells. Studies in yeast demonstrated that ORC binds specifically to origins of replication and serves as a platform for the assembly of additional initiation factors such as Cdc6 and Mcm proteins. The protein encoded by this gene is the largest subunit of the ORC complex. While other ORC subunits are stable throughout the cell cycle, the levels of this protein vary during the cell cycle, which has been shown to be controlled by ubiquitin-mediated proteolysis after initiation of DNA replication. This protein is found to be selectively phosphorylated during mitosis. It is also reported to interact with MYST histone acetyltransferase 2 (MyST2/HBO1), a protein involved in control of transcription silencing. Alternatively spliced transcrfunction:Component of the origin recognition complex (ORC) that binds origins of replication. It has a role in both chromosomal replication and mating type transcriptional silencing. Binds to the ARS consensus sequence (ACS) of origins of replication in an ATP-dependent manner.,similarity:Belongs to the ORC1 family.,similarity:Contains 1 BAH domain.,subunit:ORC is composed of six subunits. Interacts with CDC6 and MYST2/HBO1.,

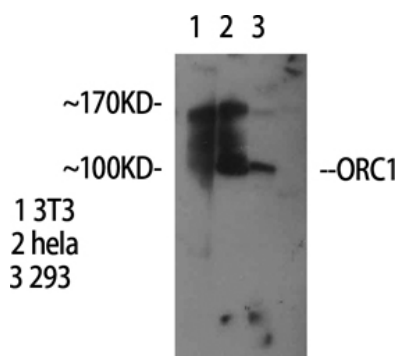
## Research Area

Cell\_Cycle\_G1S;Cell\_Cycle\_G2M\_DNA;

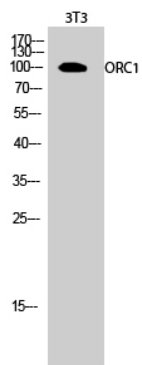
## Image Data



Western blot analysis of the lysates from HepG2 cells using ORC1L antibody.



Western Blot analysis of various cells using ORC1 Polyclonal Antibody



Western Blot analysis of 3T3 cells using ORC1 Polyclonal Antibody