

---

**Product Name: OMG Rabbit Polyclonal Antibody****Catalog #: APRab15350**

For research use only.

**Summary**

<b>Description</b>	Rabbit polyclonal Antibody
<b>Host</b>	Rabbit
<b>Application</b>	WB,IHC,ICC/IF,ELISA
<b>Reactivity</b>	Human,Rat,Mouse
<b>Conjugation</b>	Unconjugated
<b>Modification</b>	Unmodified
<b>Isotype</b>	IgG
<b>Clonality</b>	Polyclonal
<b>Form</b>	Liquid
<b>Concentration</b>	1mg/ml
<b>Storage</b>	Aliquot and store at -20°C (valid for 12 months). Avoid freeze/thaw cycles.
<b>Shipping</b>	Ice bags
<b>Buffer</b>	Liquid in PBS containing 50% glycerol, 0.5% protective protein and 0.02% New type preservative N.
<b>Purification</b>	Affinity purification

**Application**

<b>Dilution Ratio</b>	WB 1:500-1:2000,IHC 1:100-1:300,ICC/IF 1:50-1:200,ELISA 1:5000-1:20000
<b>Molecular Weight</b>	48kDa

**Antigen Information**

<b>Gene Name</b>	OMG
<b>Alternative Names</b>	OMG; OMGP; Oligodendrocyte-myelin glycoprotein
<b>Gene ID</b>	4974.0
<b>SwissProt ID</b>	P23515
<b>Immunogen</b>	The antiserum was produced against synthesized peptide derived from human OMG. AA range:282-331

**Background**

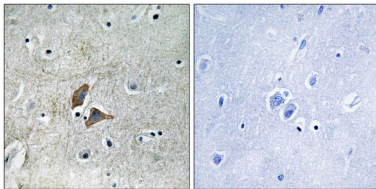
caution:Do not confuse oligodendrocyte-myelin glycoprotein (OMG) with myelin-oligodendrocyte glycoprotein

(MOG),function:Cell adhesion molecule contributing to the interactive process required for myelination in the central nervous system.,PTM:O-glycosylated in its Ser/Thr-rich repeat domain .,similarity:Contains 8 LRR (leucine-rich) repeats.,subunit:Binds to RTN4R.,tissue specificity:Oligodendrocytes and myelin of the central nervous system.,caution:Do not confuse oligodendrocyte-myelin glycoprotein (OMG) with myelin-oligodendrocyte glycoprotein (MOG),function:Cell adhesion molecule contributing to the interactive process required for myelination in the central nervous system.,PTM:O-glycosylated in its Ser/Thr-rich repeat domain .,similarity:Contains 8 LRR (leucine-rich) repeats.,subunit:Binds to RTN4R.,tissue specificity:Oligodendrocytes and myelin of the central nervous system.,

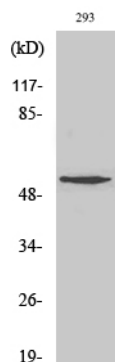
## Research Area

Cell Adhesion Proteins; Membrane Proteins; Neuroscience; Cell Type Marker; Glia marker; Oligodendrocyte marker

## Image Data



Immunohistochemistry analysis of paraffin-embedded human brain, using OMG Antibody. The picture on the right is blocked with the synthesized peptide.



Western Blot analysis of various cells using OMG Polyclonal Antibody