

Product Name: Olfactory receptor 52A4 Rabbit Polyclonal Antibody**Catalog #: APRab15257**

For research use only.

Summary

Description	Rabbit polyclonal Antibody
Host	Rabbit
Application	WB,ICC/IF,ELISA
Reactivity	Human,Rat,Mouse
Conjugation	Unconjugated
Modification	Unmodified
Isotype	IgG
Clonality	Polyclonal
Form	Liquid
Concentration	1mg/ml
Storage	Aliquot and store at -20°C (valid for 12 months). Avoid freeze/thaw cycles.
Shipping	Ice bags
Buffer	Liquid in PBS containing 50% glycerol, 0.5% protective protein and 0.02% New type preservative N.
Purification	Affinity purification

Application

Dilution Ratio	WB 1:500-1:2000,ICC/IF 1:200-1:1000,ELISA 1:5000-1:20000
Molecular Weight	35kDa

Antigen Information

Gene Name	OR52A4
Alternative Names	OR52A4; Putative olfactory receptor 52A4
Gene ID	390053.0
SwissProt ID	A6NMU1
Immunogen	The antiserum was produced against synthesized peptide derived from human OR52A4. AA range:211-260

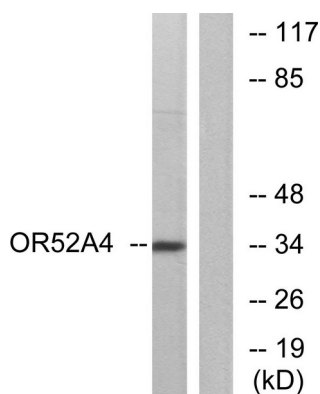
Background

Olfactory receptors interact with odorant molecules in the nose, to initiate a neuronal response that triggers the perception of a

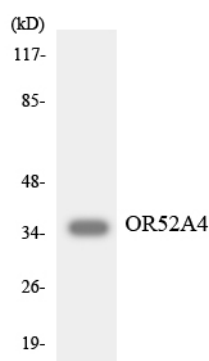
smell. The olfactory receptor proteins are members of a large family of G-protein-coupled receptors (GPCR) arising from single coding-exon genes. Olfactory receptors share a 7-transmembrane domain structure with many neurotransmitter and hormone receptors and are responsible for the recognition and G protein-mediated transduction of odorant signals. The olfactory receptor gene family is the largest in the genome. The nomenclature assigned to the olfactory receptor genes and proteins for this organism is independent of other organisms. Although originally considered to be a functional olfactory receptor, this family member is now considered to be pseudogene due to the presence of a C-terminal frameshift compared to other family members. **caution:** Could be the product of a pseudogene. Has a truncated and frameshifted C-terminal region. **similarity:** Belongs to the G-protein coupled receptor 1 family.

Research Area

Image Data



Western blot analysis of lysates from MCF-7 cells, using OR52A4 Antibody. The lane on the right is blocked with the synthesized peptide.



Western blot analysis of the lysates from K562 cells using OR52A4 antibody.