
Product Name: Olfactory receptor 4A15 Rabbit Polyclonal Antibody**Catalog #: APRab15213**

For research use only.

Summary

Description	Rabbit polyclonal Antibody
Host	Rabbit
Application	WB,ICC/IF,ELISA
Reactivity	Human,Rat,Mouse
Conjugation	Unconjugated
Modification	Unmodified
Isotype	IgG
Clonality	Polyclonal
Form	Liquid
Concentration	1mg/ml
Storage	Aliquot and store at -20°C (valid for 12 months). Avoid freeze/thaw cycles.
Shipping	Ice bags
Buffer	Liquid in PBS containing 50% glycerol, 0.5% protective protein and 0.02% New type preservative N.
Purification	Affinity purification

Application

Dilution Ratio	WB 1:500-1:2000,ICC/IF 1:200-1:1000,ELISA 1:5000-1:20000
Molecular Weight	36kDa

Antigen Information

Gene Name	OR4A15
Alternative Names	OR4A15; Olfactory receptor 4A15; Olfactory receptor OR11-118
Gene ID	81328.0
SwissProt ID	Q8NGL6
Immunogen	The antiserum was produced against synthesized peptide derived from human OR4A15. AA range:261-310

Background

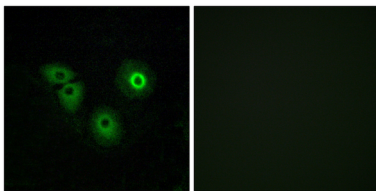
Olfactory receptors interact with odorant molecules in the nose, to initiate a neuronal response that triggers the perception of a

smell. The olfactory receptor proteins are members of a large family of G-protein-coupled receptors (GPCR) arising from single coding-exon genes. Olfactory receptors share a 7-transmembrane domain structure with many neurotransmitter and hormone receptors and are responsible for the recognition and G protein-mediated transduction of odorant signals. The olfactory receptor gene family is the largest in the genome. The nomenclature assigned to the olfactory receptor genes and proteins for this organism is independent of other organisms. [provided by RefSeq, Jul 2008],caution:It is uncertain whether Met-1 or Met-31 is the initiator.,function:Odorant receptor .,similarity:Belongs to the G-protein coupled receptor 1 family.,

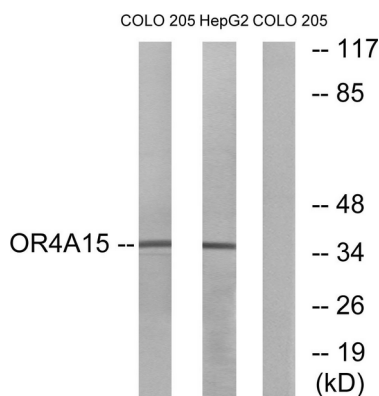
Research Area

Olfactory transduction;

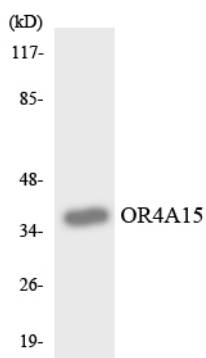
Image Data



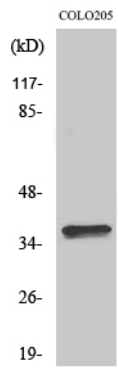
Immunofluorescence analysis of A549 cells, using OR4A15 Antibody. The picture on the right is blocked with the synthesized peptide.



Western blot analysis of lysates from COLO and HepG2 cells, using OR4A15 Antibody. The lane on the right is blocked with the synthesized peptide.



Western blot analysis of the lysates from HeLa cells using OR4A15 antibody.



Western Blot analysis of various cells using Olfactory receptor 4A15 Polyclonal Antibody